



BROOK HOUSE
Cricket Green Mitcham London CR4

A superb collection of 1 & 2 bedroom apartments

BROOK HOUSE

London CR4



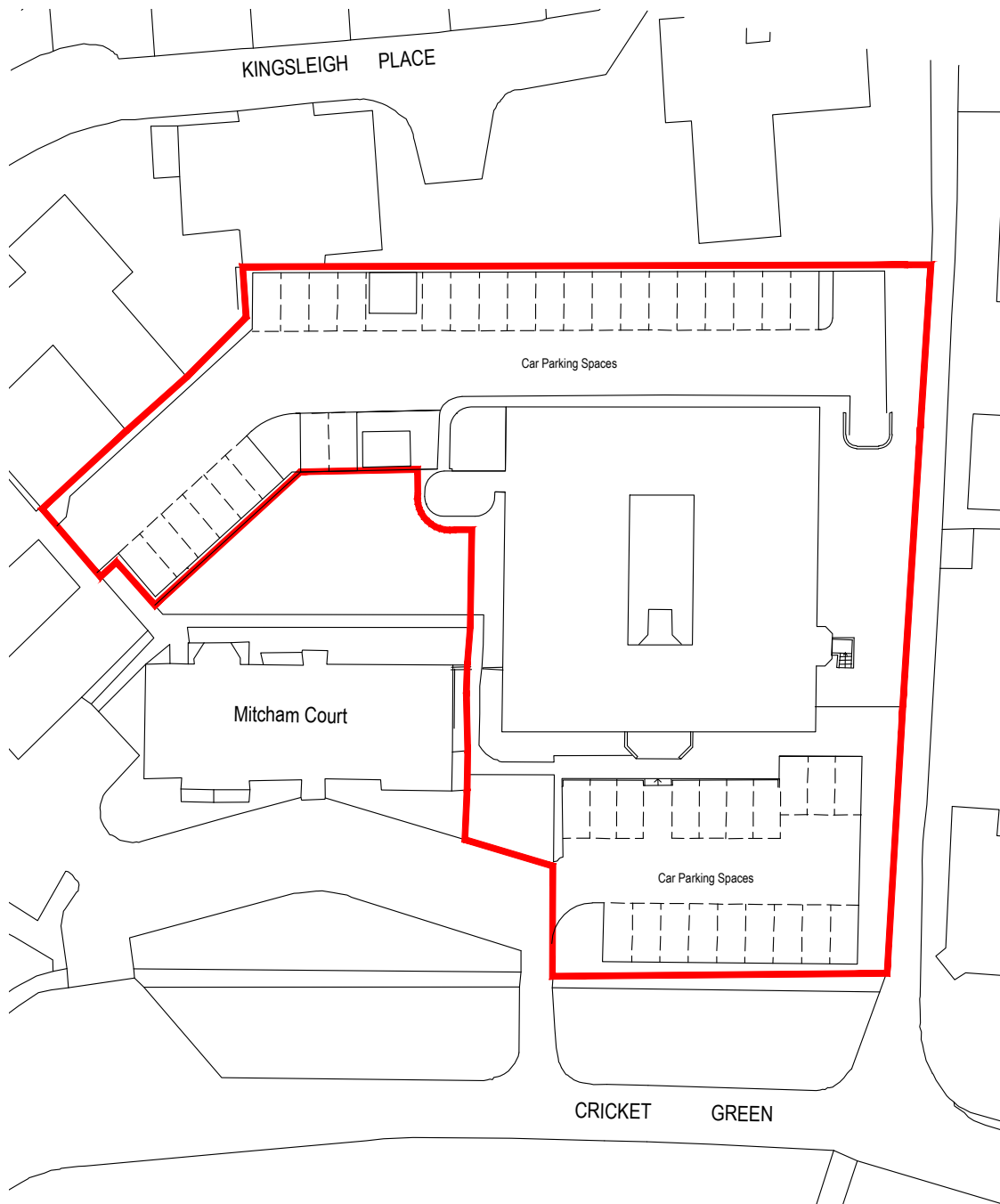
TOTAL REFURBISHMENT | ONE & TWO BEDROOM APARTMENTS | LONDON
VICTORIA IN 17 MINUTES | £210,000 TO £307,000 | 323 SQ.FT. | 495 SQ.FT |
ALL UNITS HAVE CAR PARKING



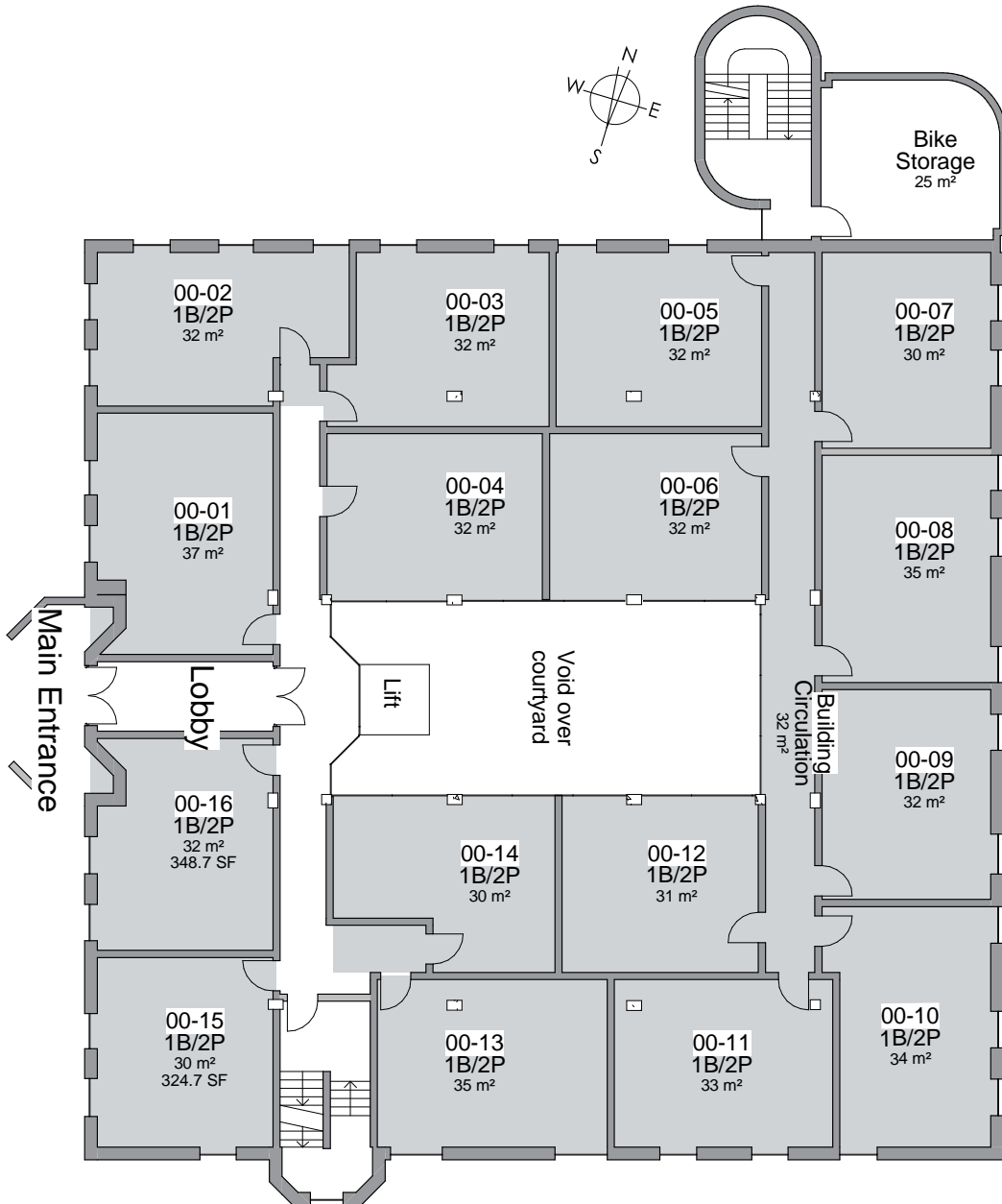
BROOK HOUSE

CR4

Site Plan



Ground floor



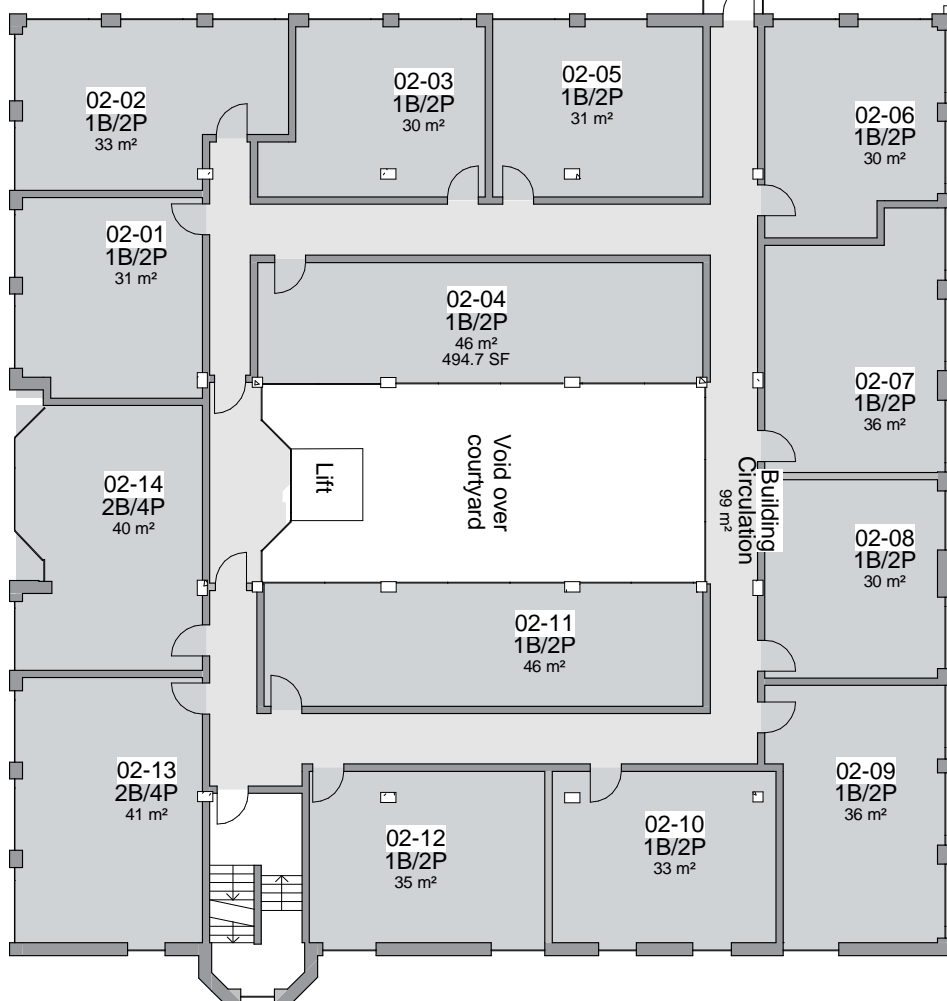
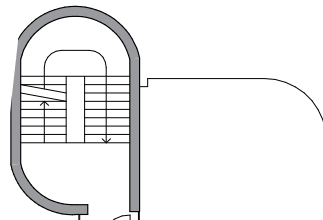
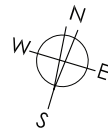
BROOK HOUSE

CR4

First floor

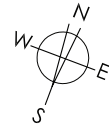


Second floor



BROOK HOUSE

CR4



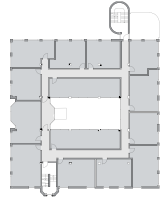
Ground Floor



First Floor



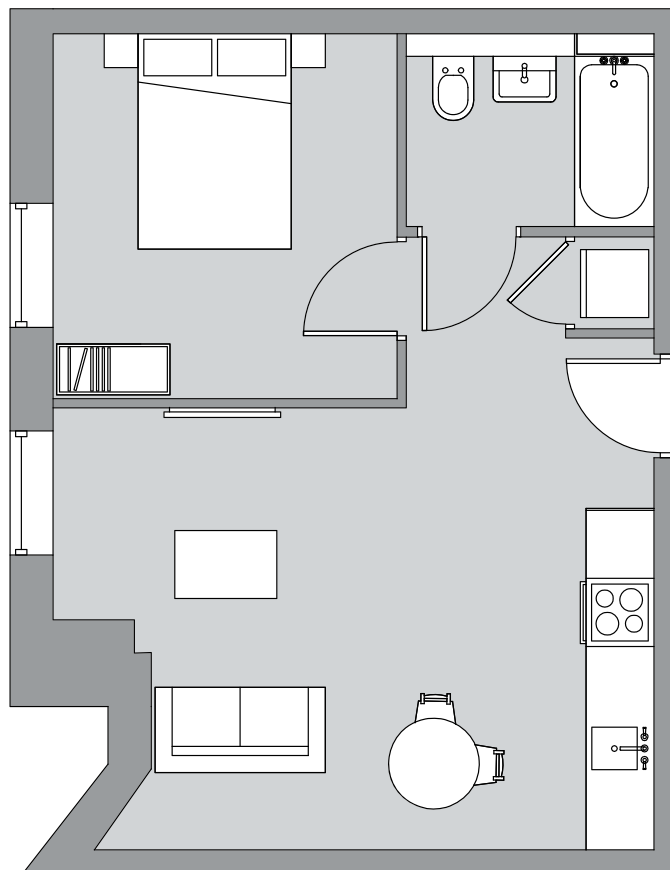
Second Floor



1 bedroom apartment

Apartment number: 00-01

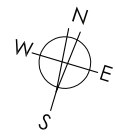
Total Area 37 sq m 398 sq ft



1 bedroom apartment

Apartment number: 00-02

Total Area 32 sq m 344 sq ft



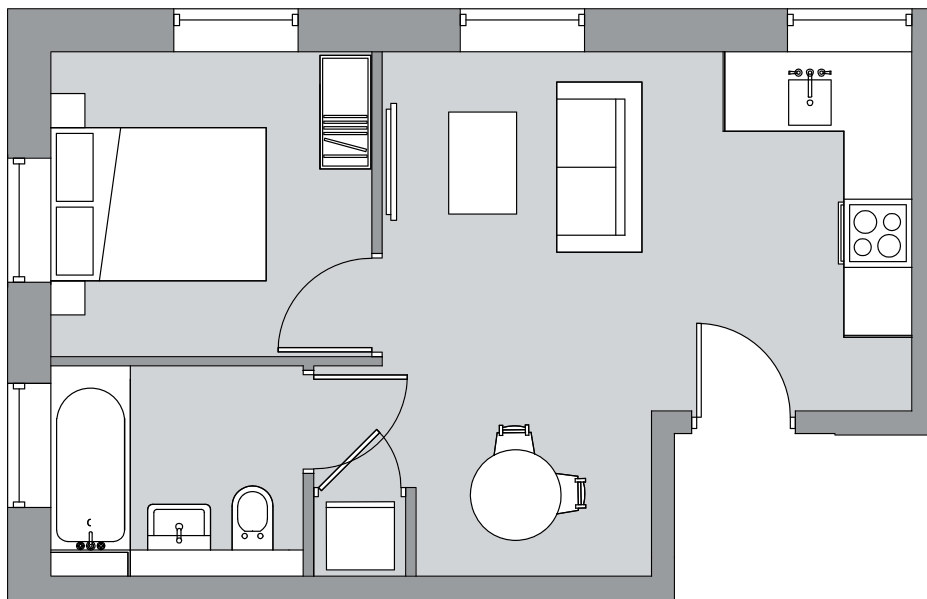
Ground Floor



First Floor

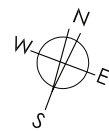


Second Floor



BROOK HOUSE

CR4



Ground Floor



First Floor



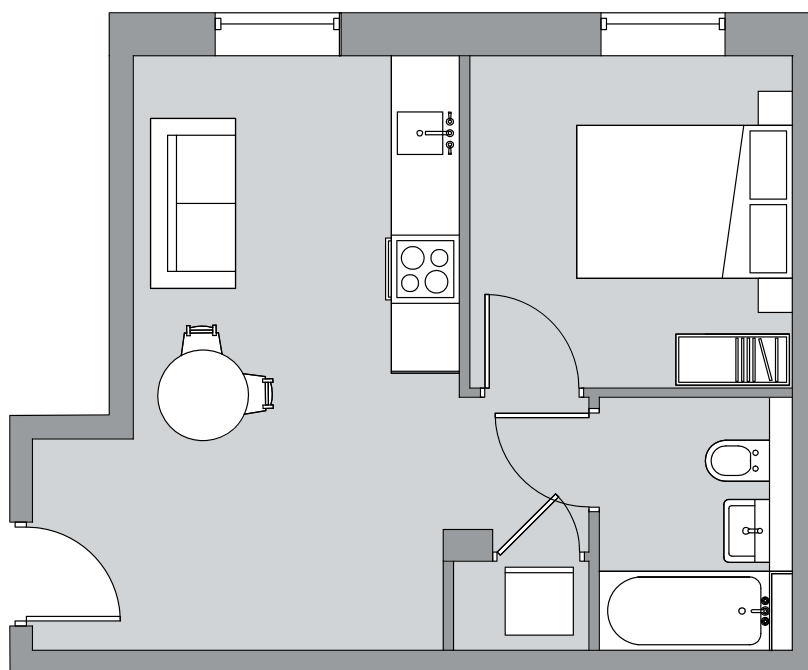
Second Floor



1 bedroom apartment

Apartment number: 00-03, 01-03

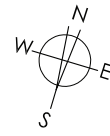
Total Area 32 sq m 344 sq ft



1 bedroom apartment

Apartment number: 00-04, 01-04

Total Area 32 sq m 344 sq ft



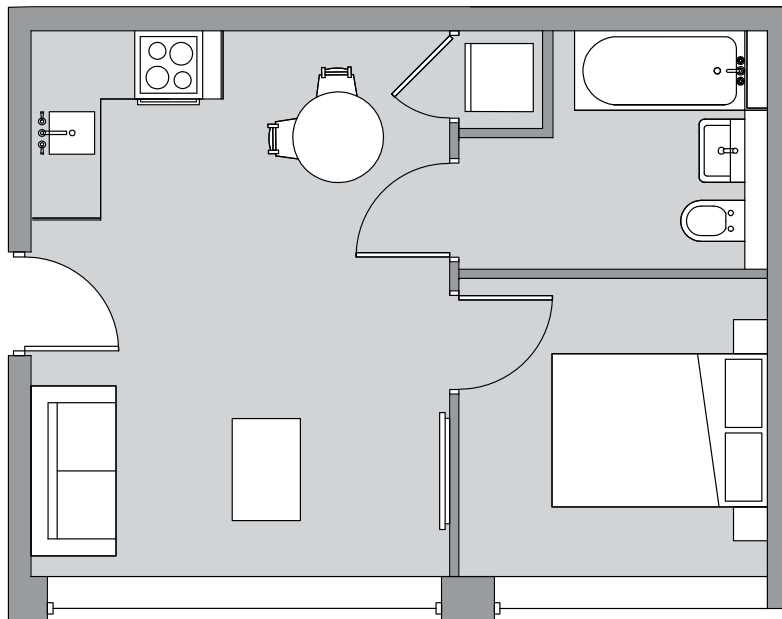
Ground Floor



First Floor

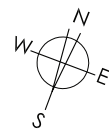


Second Floor



BROOK HOUSE

CR4



Ground Floor



First Floor



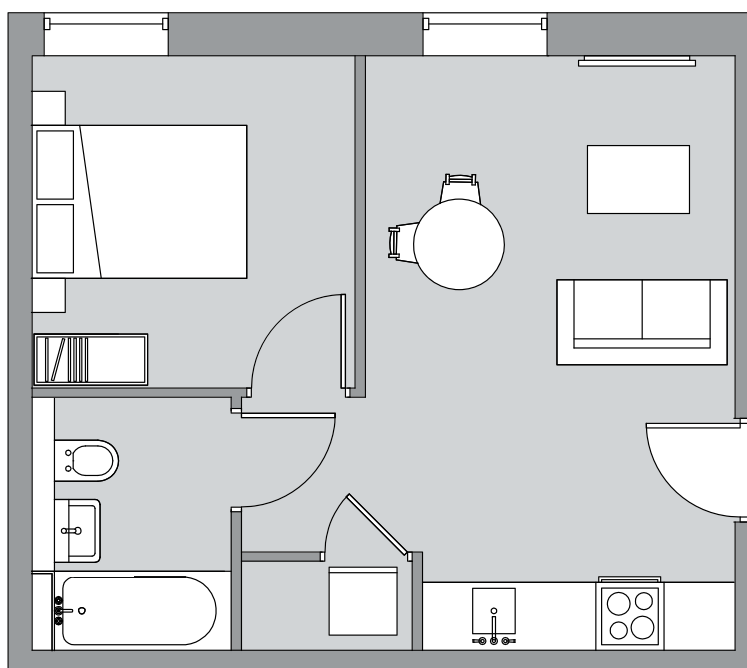
Second Floor



1 bedroom apartment

Apartment number: 00-05, 01-05

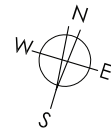
Total Area 32 sq m 344 sq ft



1 bedroom apartment

Apartment number: 00-06, 01-06

Total Area 32 sq m 344 sq ft



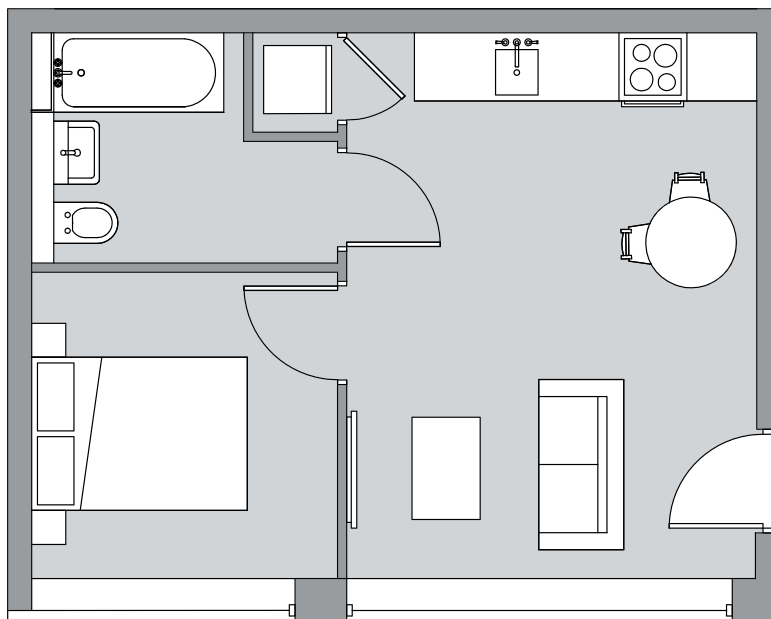
Ground Floor



First Floor

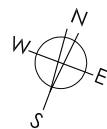


Second Floor



BROOK HOUSE

CR4



Ground Floor



First Floor



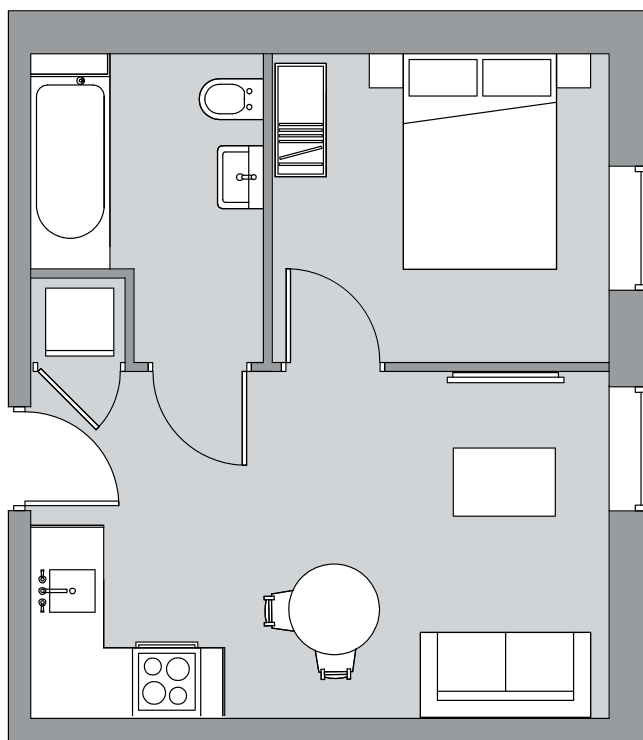
Second Floor



1 bedroom apartment

Apartment number: 00-07, 01-07

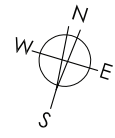
Total Area 30 sq m 323 sq ft



1 bedroom apartment

Apartment number: 00-08, 01-08

Total Area 35 sq m 377 sq ft



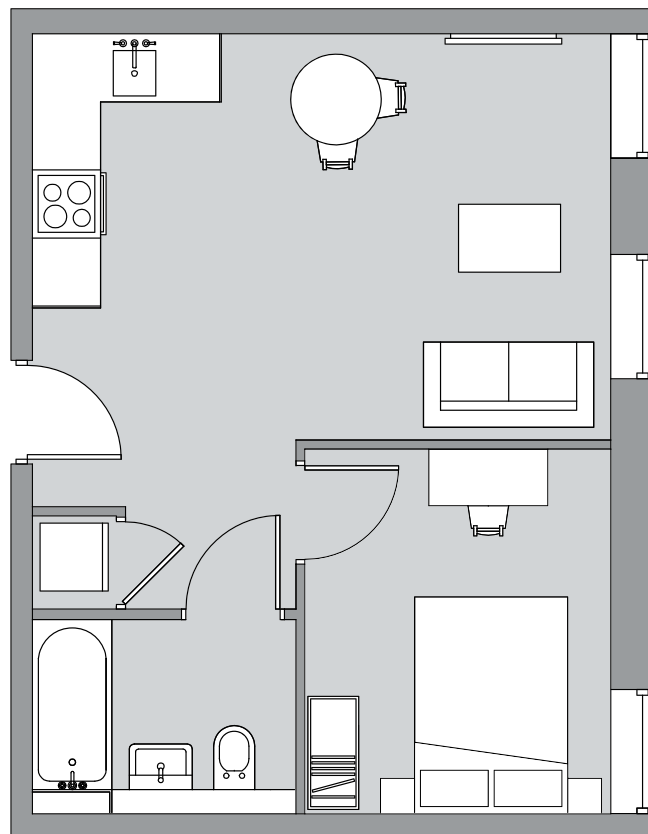
Ground Floor



First Floor

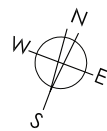


Second Floor



BROOK HOUSE

CR4



Ground Floor



First Floor



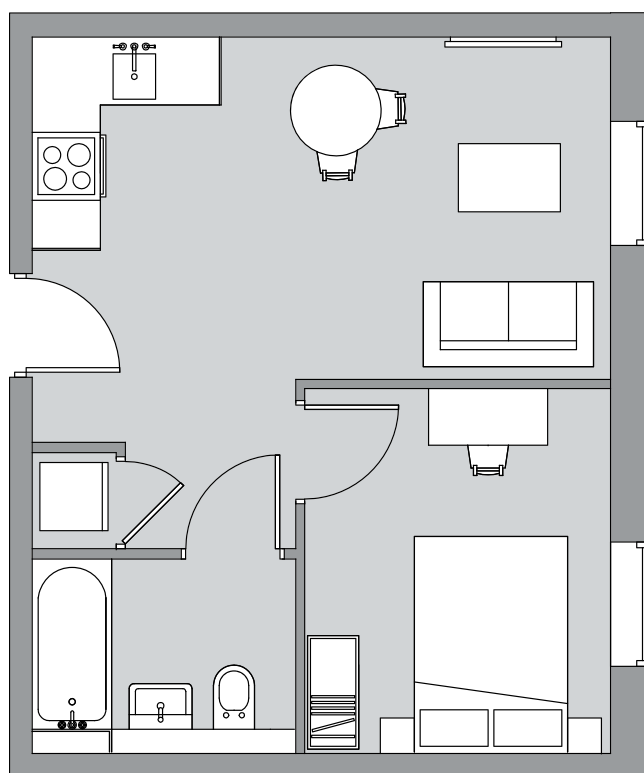
Second Floor



1 bedroom apartment

Apartment number: 00-09, 01-09

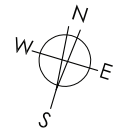
Total Area 32 sq m 344 sq ft



1 bedroom apartment

Apartment number: 00-10

Total Area 34 sq m 366 sq ft



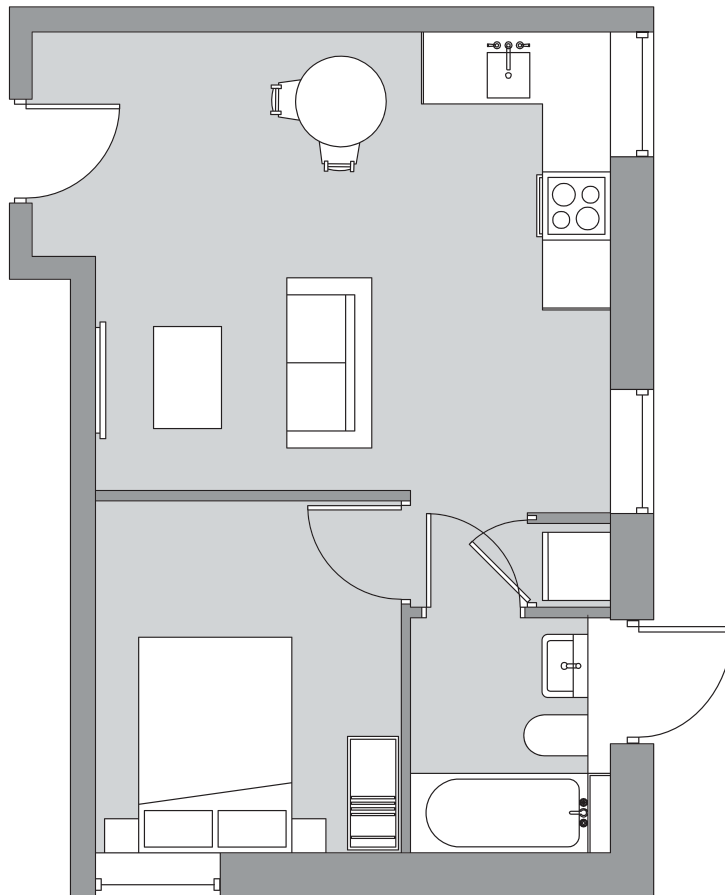
Ground Floor



First Floor

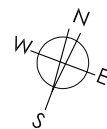


Second Floor



BROOK HOUSE

CR4



Ground Floor



First Floor



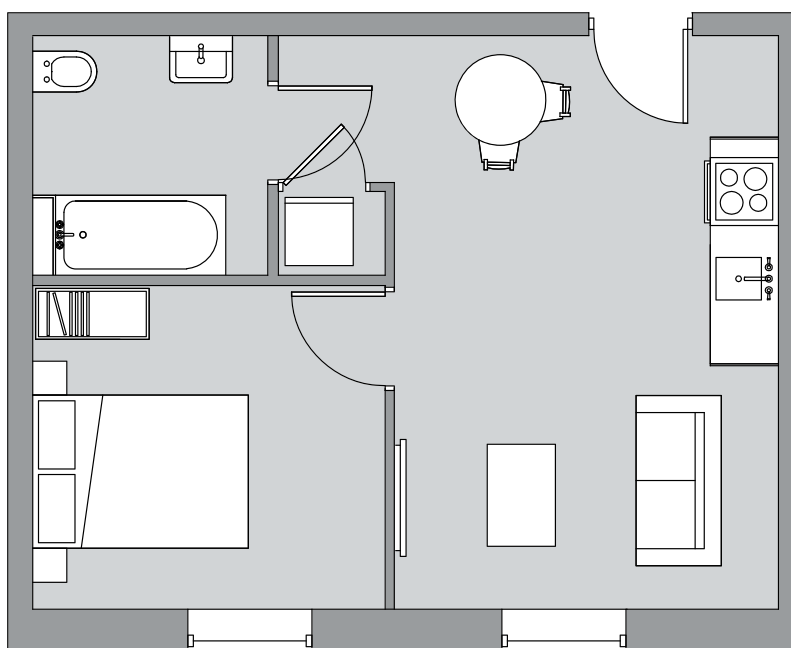
Second Floor



1 bedroom apartment

Apartment number: 00-11, 01-11

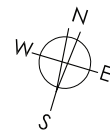
Total Area 33 sq m 355 sq ft



1 bedroom apartment

Apartment number: 00-12, 01-12

Total Area 31 sq m 334 sq ft



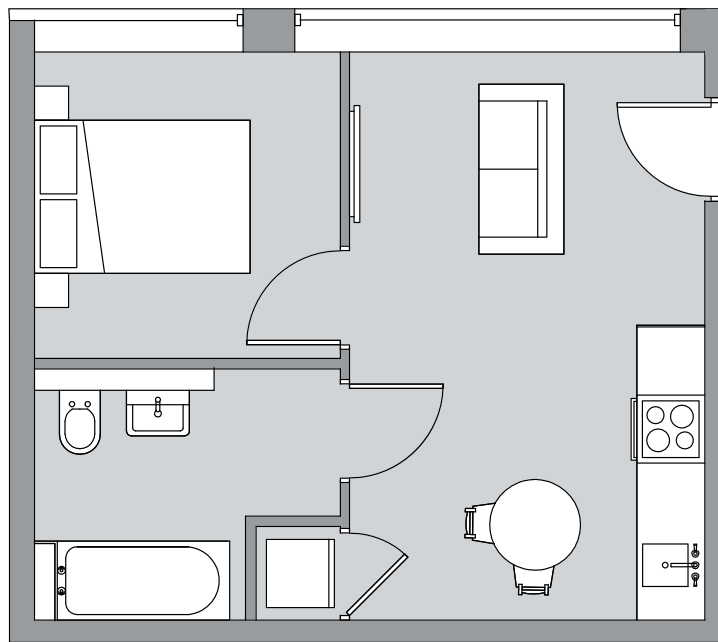
Ground Floor



First Floor

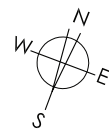


Second Floor



BROOK HOUSE

CR4



Ground Floor



First Floor



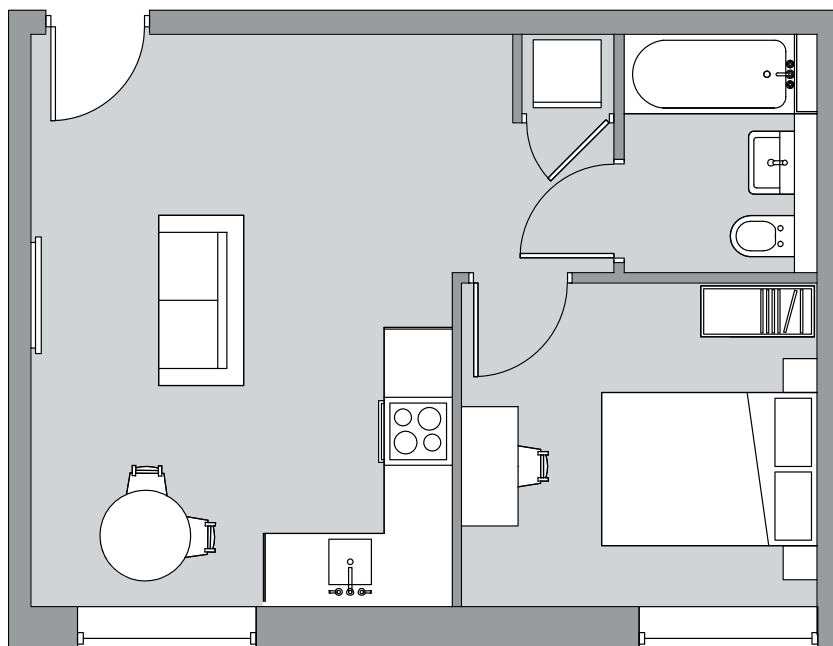
Second Floor



1 bedroom apartment

Apartment number: 00-13, 01-13, 02-12

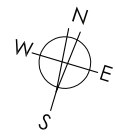
Total Area 35 sq m 377 sq ft



1 bedroom apartment

Apartment number: 00-14

Total Area 30 sq m 323 sq ft



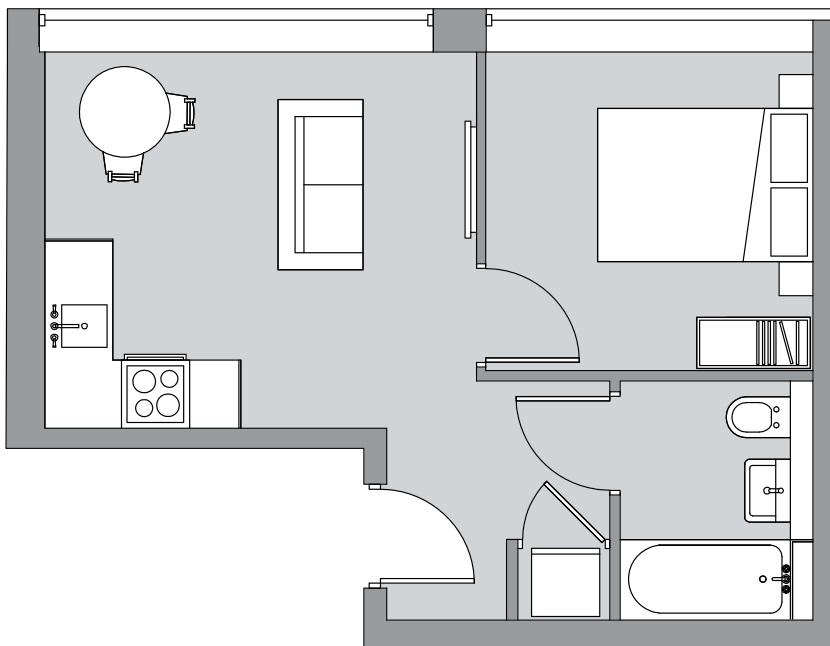
Ground Floor



First Floor

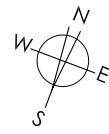


Second Floor

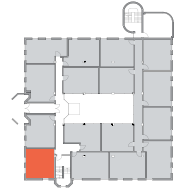


BROOK HOUSE

CR4



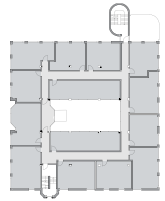
Ground Floor



First Floor



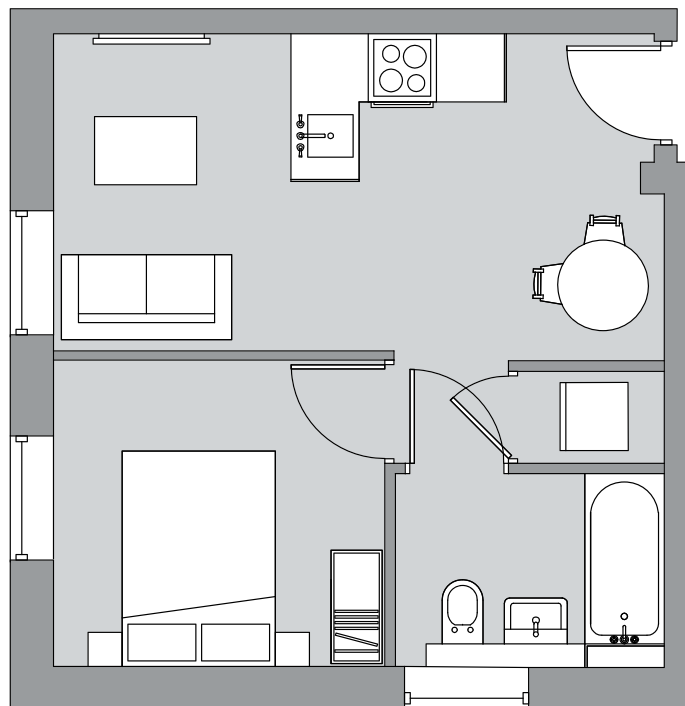
Second Floor

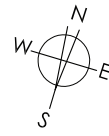


1 bedroom apartment

Apartment number: 00-15

Total Area 30 sq m 323 sq ft





Ground Floor



First Floor



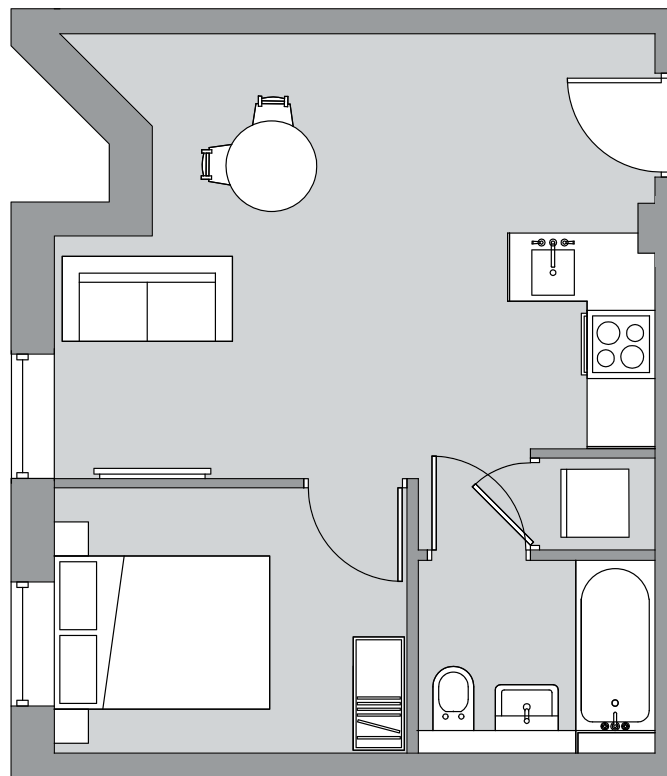
Second Floor



1 bedroom apartment

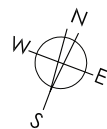
Apartment number: 00-16

Total Area 32 sq m 344 sq ft



BROOK HOUSE

CR4



Ground Floor



First Floor



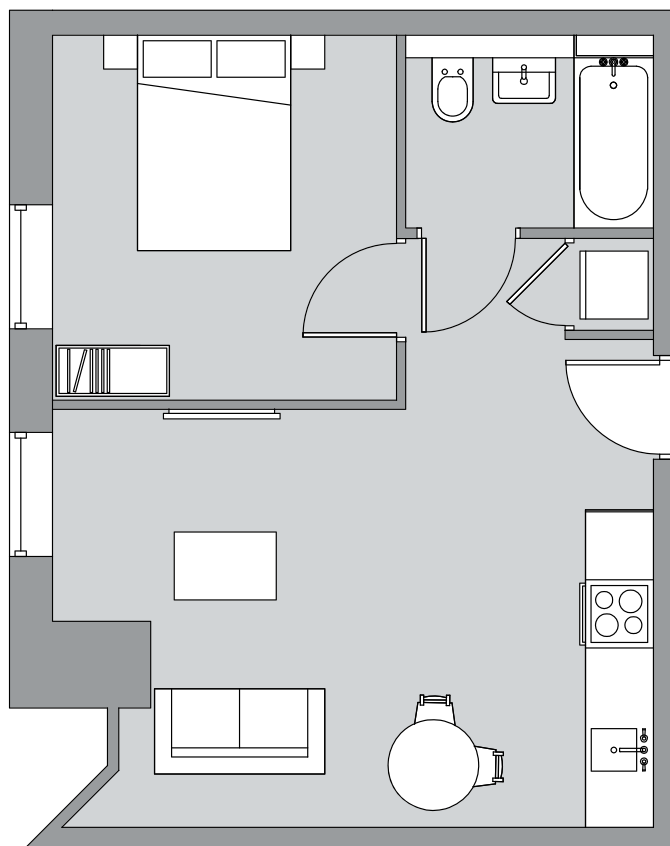
Second Floor



1 bedroom apartment

Apartment number: 01-01

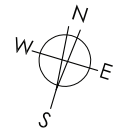
Total Area 35 sq m 337 sq ft



1 bedroom apartment

Apartment number: 01-02

Total Area 31 sq m 334 sq ft



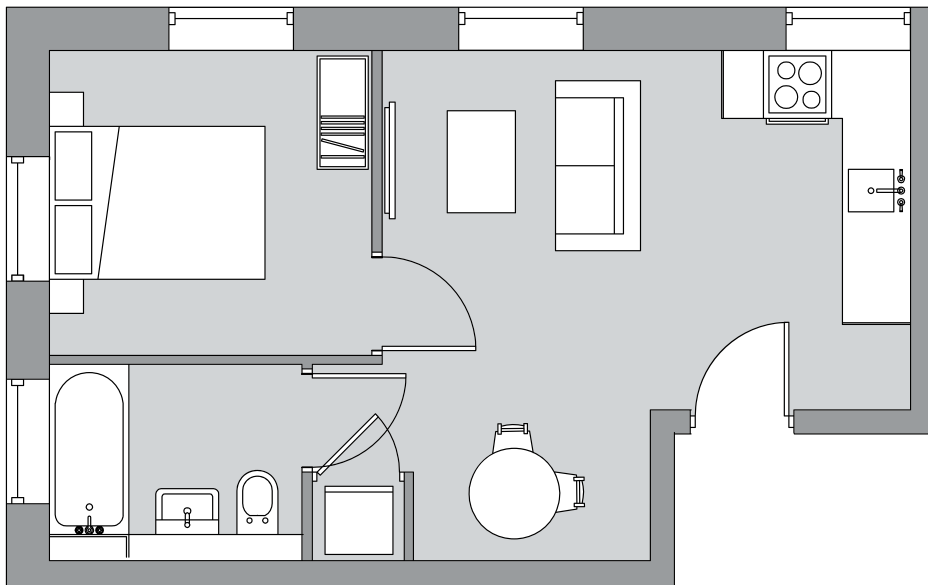
Ground Floor



First Floor

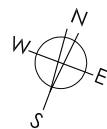


Second Floor



BROOK HOUSE

CR4



Ground Floor



First Floor



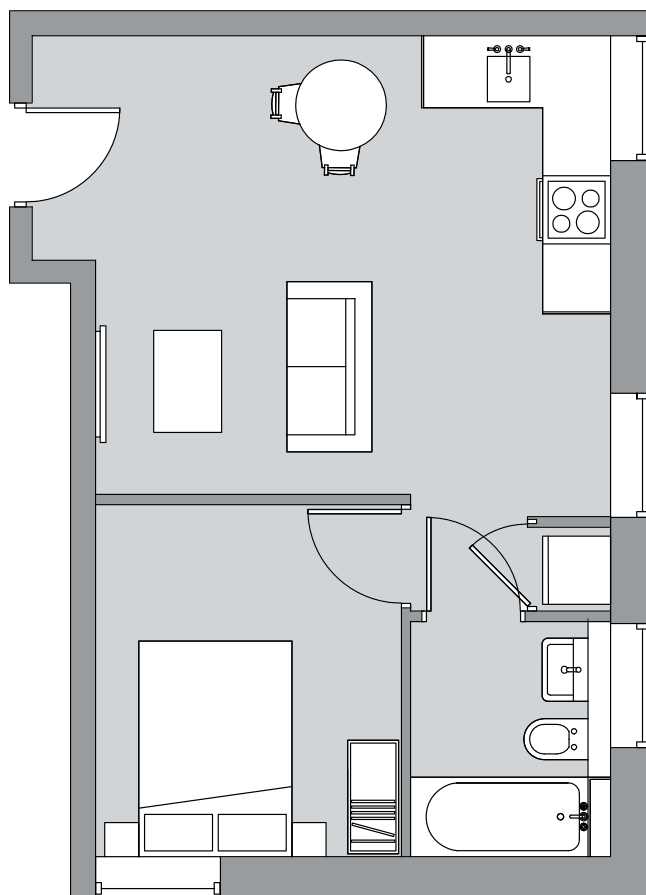
Second Floor



1 bedroom apartment

Apartment number: 01-10

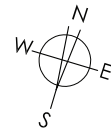
Total Area 34 sq m 366 sq ft



1 bedroom apartment

Apartment number: 01-14

Total Area 30 sq m 323 sq ft



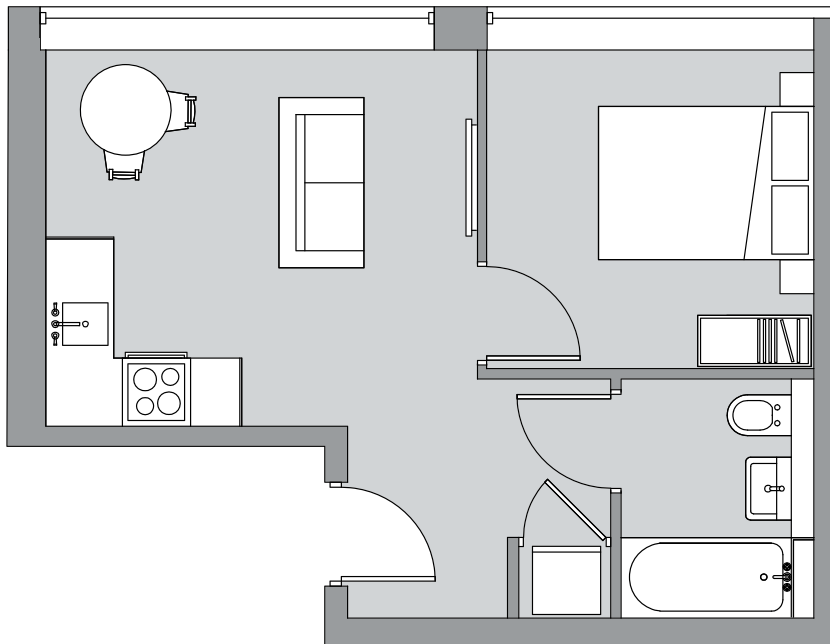
Ground Floor



First Floor

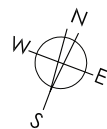


Second Floor



BROOK HOUSE

CR4



Ground Floor



First Floor



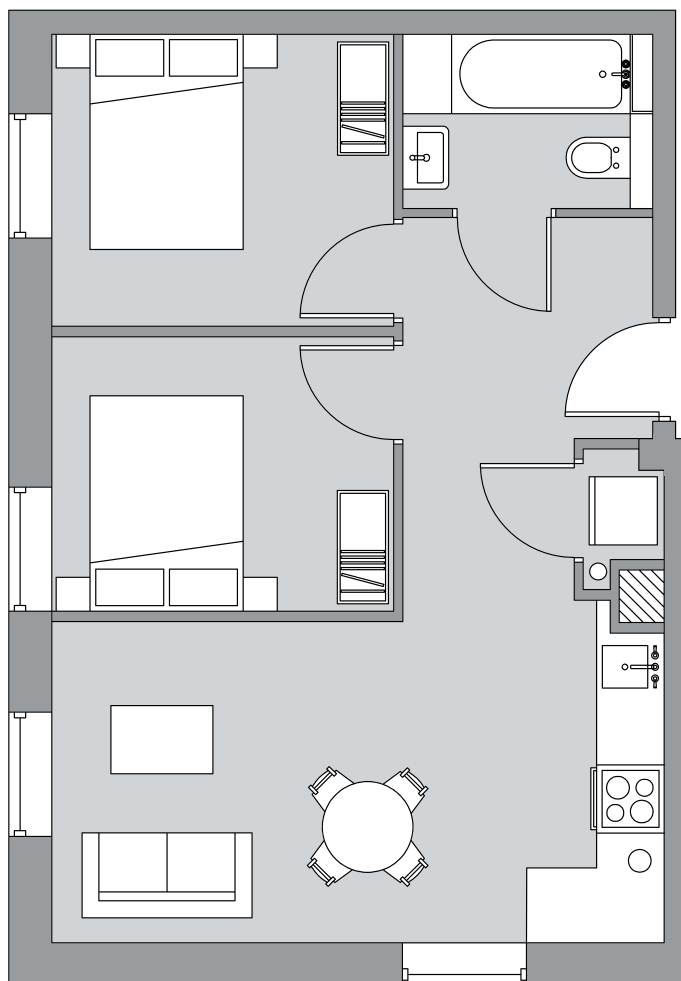
Second Floor



2 bedroom apartment

Apartment number: 01-15

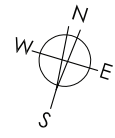
Total Area 42 sq m 452 sq ft



1 bedroom apartment

Apartment number: 01-16

Total Area 35 sq m 377 sq ft



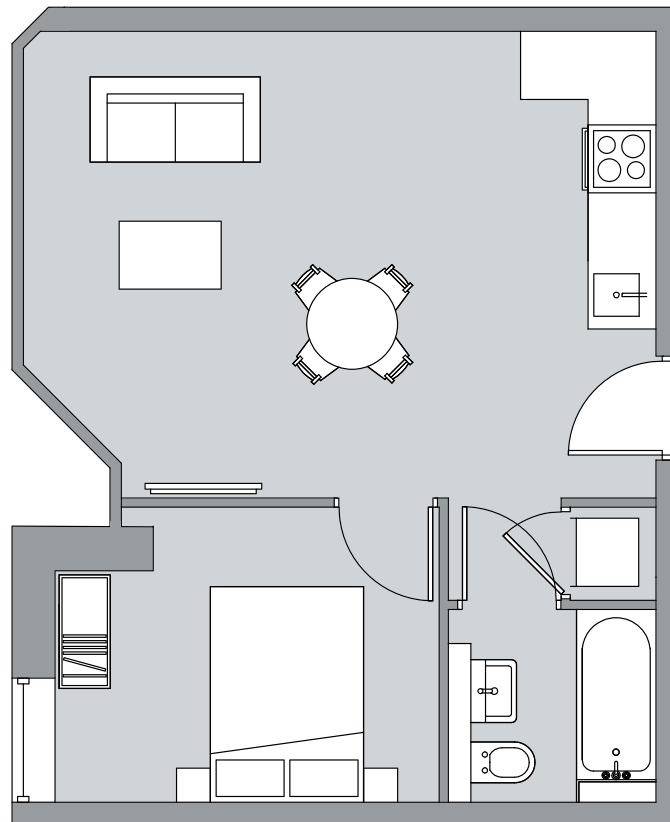
Ground Floor



First Floor

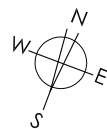


Second Floor



BROOK HOUSE

CR4



Ground Floor



First Floor



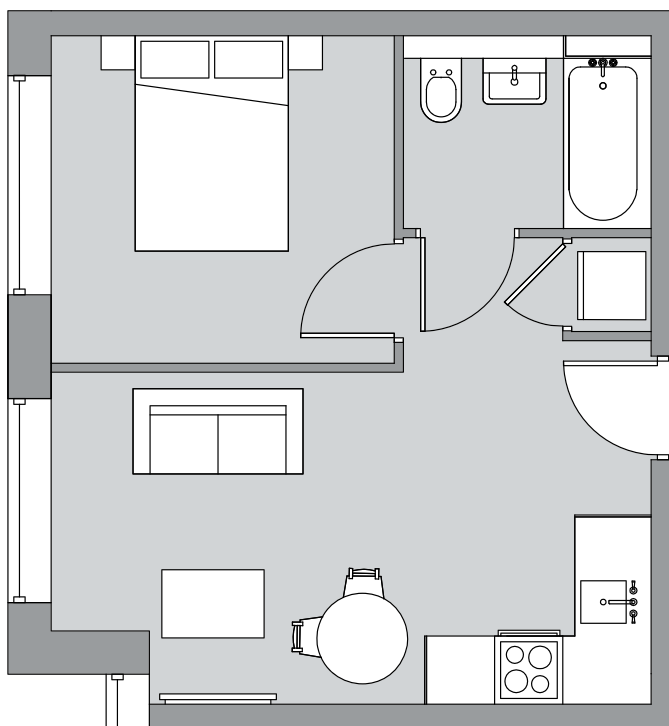
Second Floor



1 bedroom apartment

Apartment number: 02-01

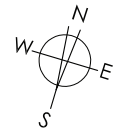
Total Area 31 sq m 334 sq ft



1 bedroom apartment

Apartment number: 02-02

Total Area 33 sq m 355 sq ft



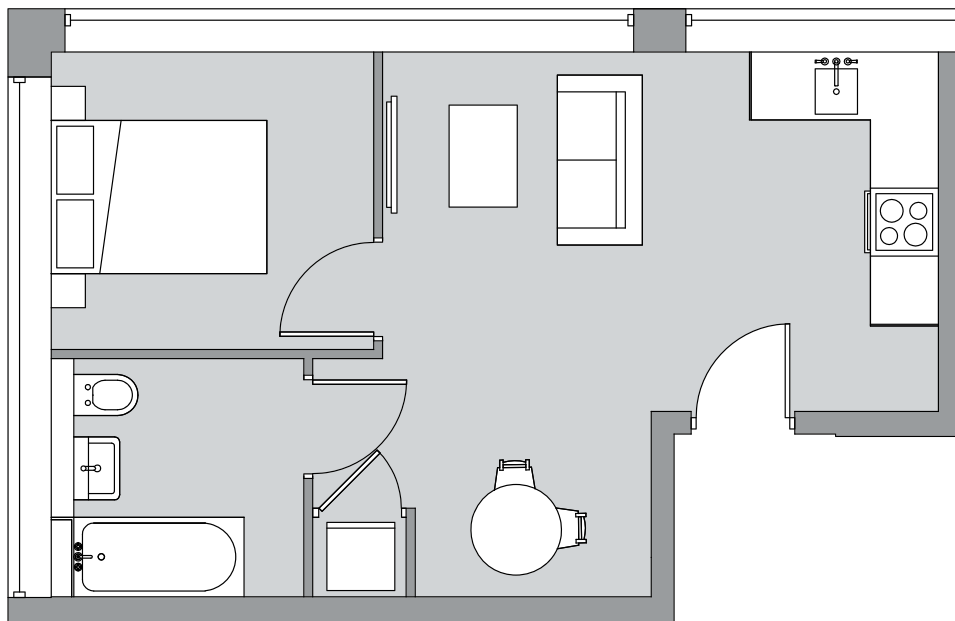
Ground Floor



First Floor

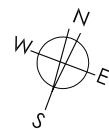


Second Floor



BROOK HOUSE

CR4



Ground Floor



First Floor



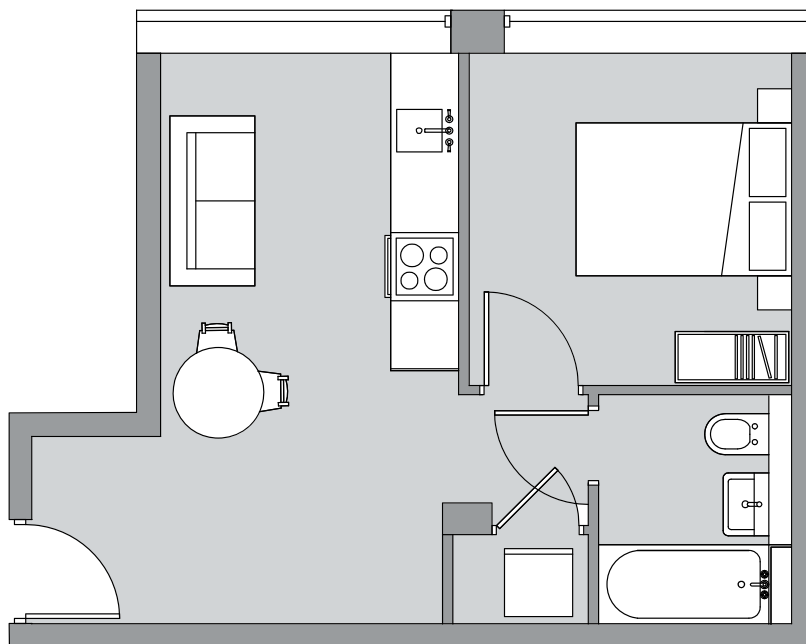
Second Floor



1 bedroom apartment

Apartment number: 02-03

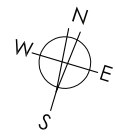
Total Area 30 sq m 323 sq ft



1 bedroom apartment

Apartment number: 02-04

Total Area 46 sq m 495 sq ft



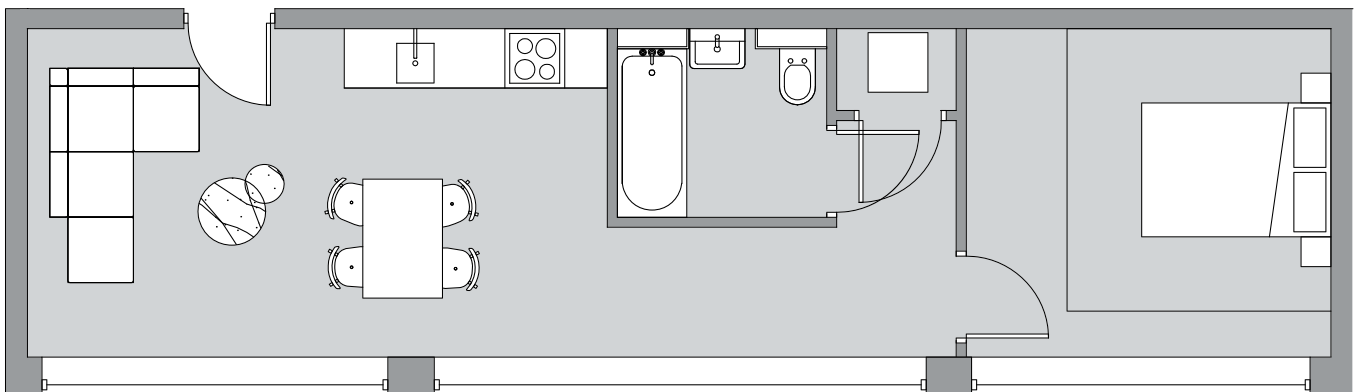
Ground Floor



First Floor

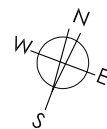


Second Floor



BROOK HOUSE

CR4



Ground Floor



First Floor



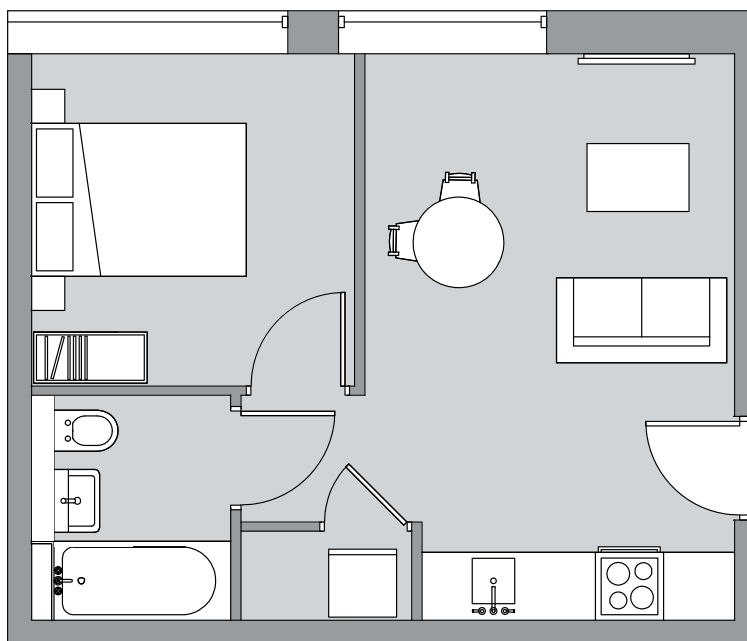
Second Floor



1 bedroom apartment

Apartment number: 02-05

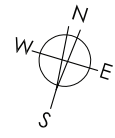
Total Area 31 sq m 334 sq ft



1 bedroom apartment

Apartment number: 02-06

Total Area 30 sq m 323 sq ft



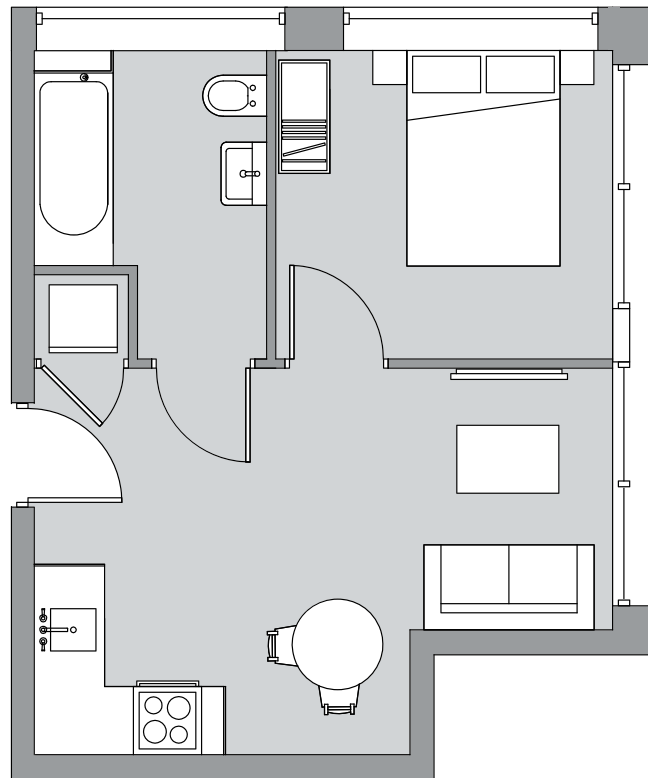
Ground Floor



First Floor



Second Floor



BROOK HOUSE

CR4



Ground Floor



First Floor



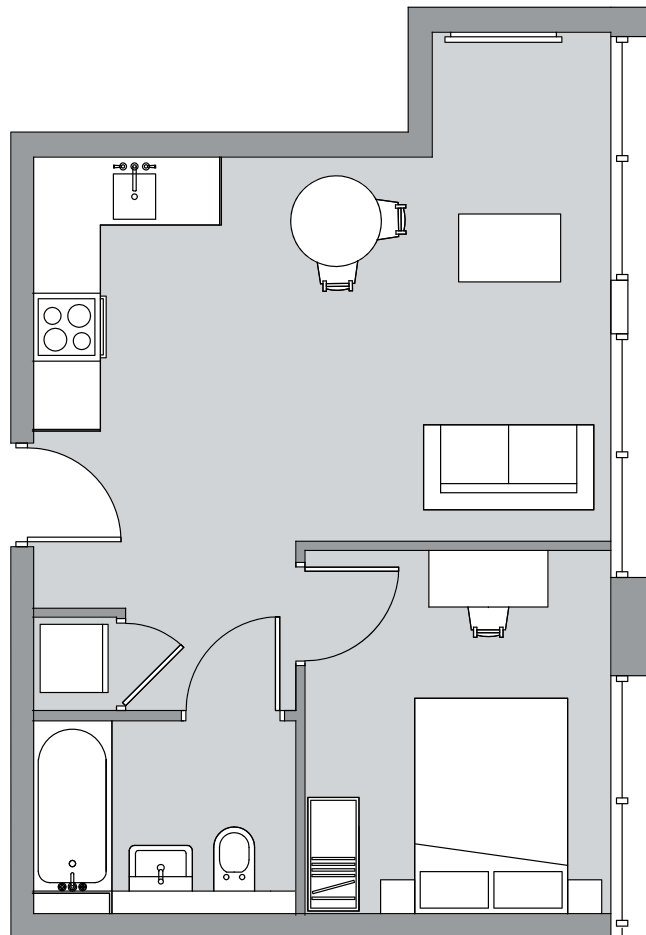
Second Floor

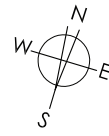


1 bedroom apartment

Apartment number: 02-07

Total Area 36 sq m 388 sq ft





Ground Floor



First Floor



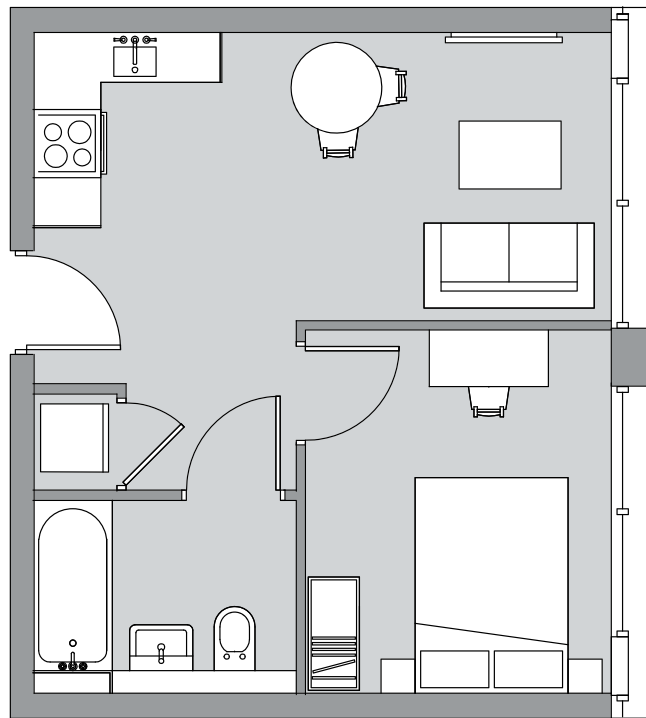
Second Floor



1 bedroom apartment

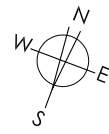
Apartment number: 02-08

Total Area 30 sq m 323 sq ft

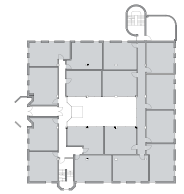


BROOK HOUSE

CR4



Ground Floor



First Floor



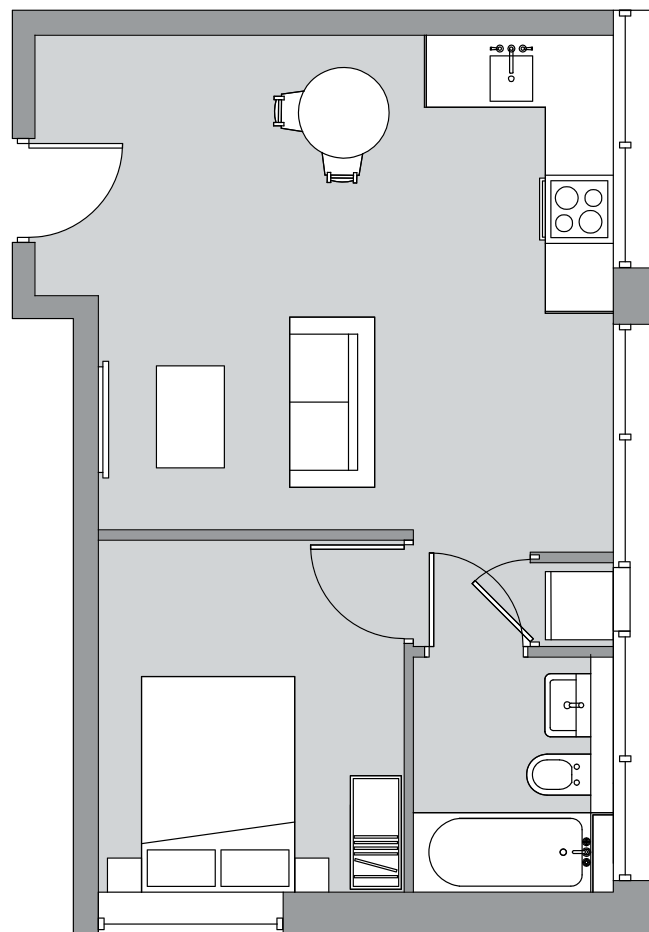
Second Floor



1 bedroom apartment

Apartment number: 02-09

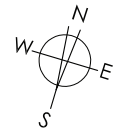
Total Area 36 sq m 388 sq ft



1 bedroom apartment

Apartment number: 02-10

Total Area 33 sq m 355 sq ft



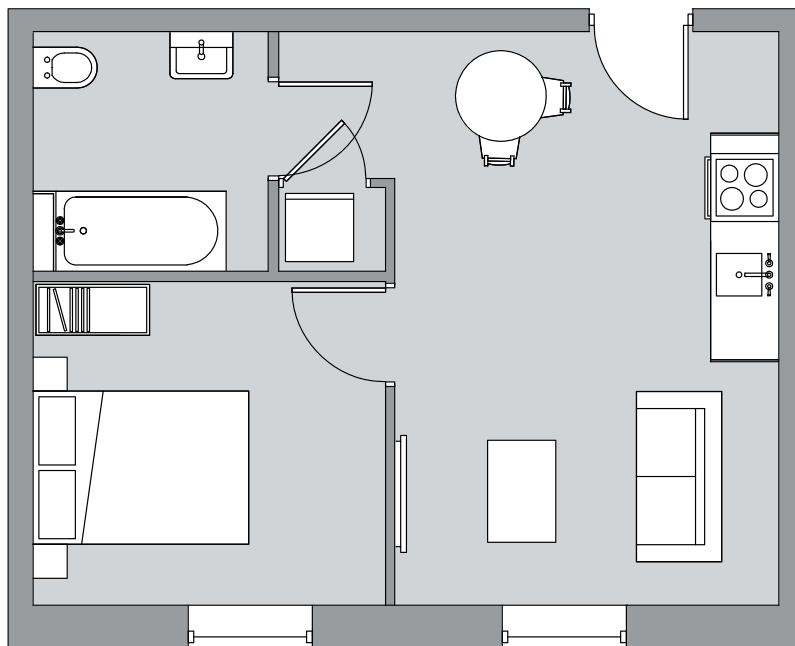
Ground Floor



First Floor

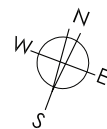


Second Floor



BROOK HOUSE

CR4



Ground Floor



First Floor



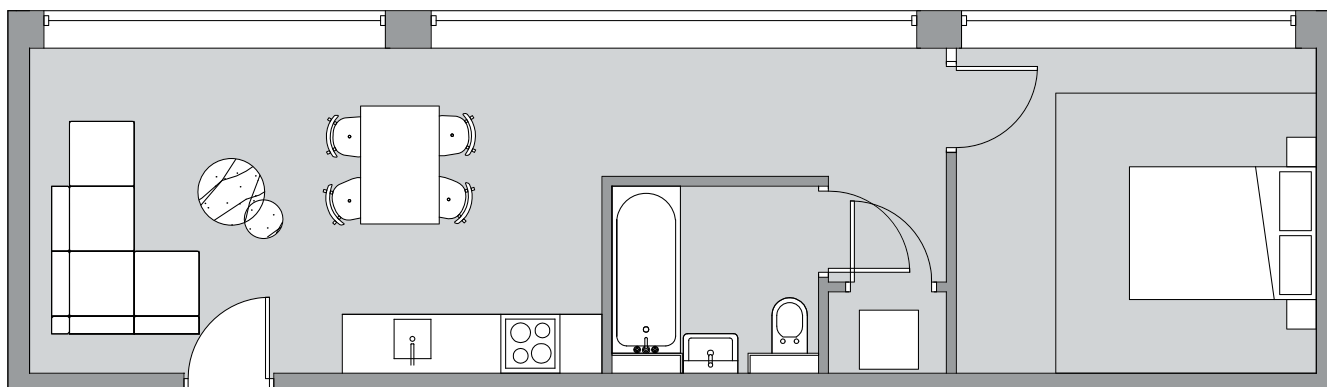
Second Floor



1 bedroom apartment

Apartment number: 02-11

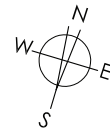
Total Area 46 sq m 495 sq ft



2 bedroom apartment

Apartment number: 02-13

Total Area 41 sq m 441 sq ft



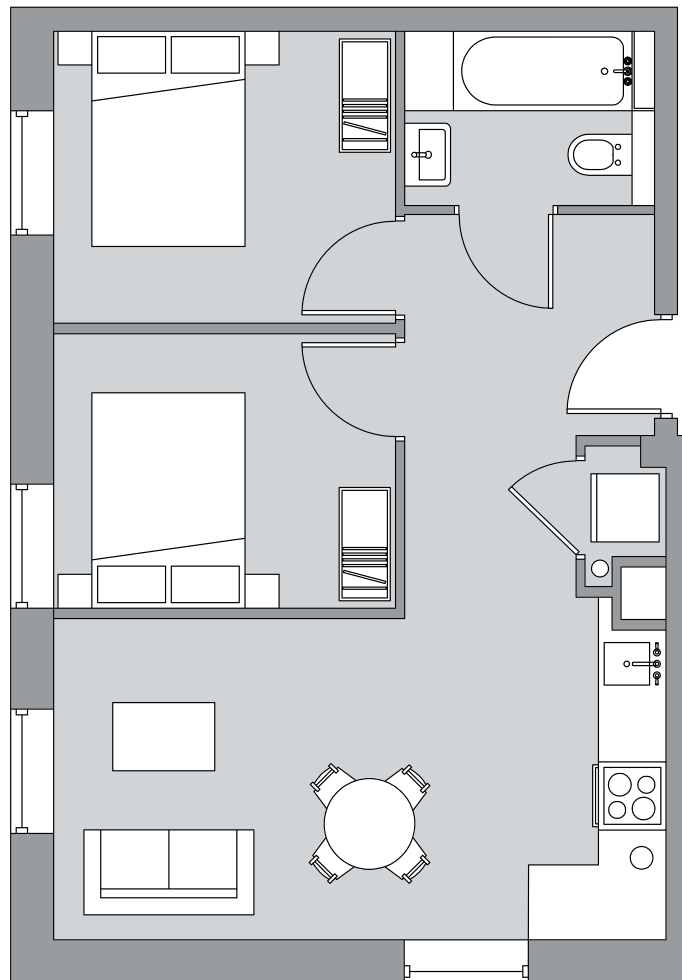
Ground Floor



First Floor

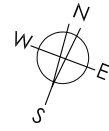


Second Floor



BROOK HOUSE

CR4



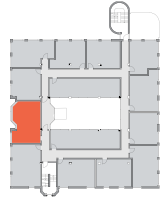
Ground Floor



First Floor



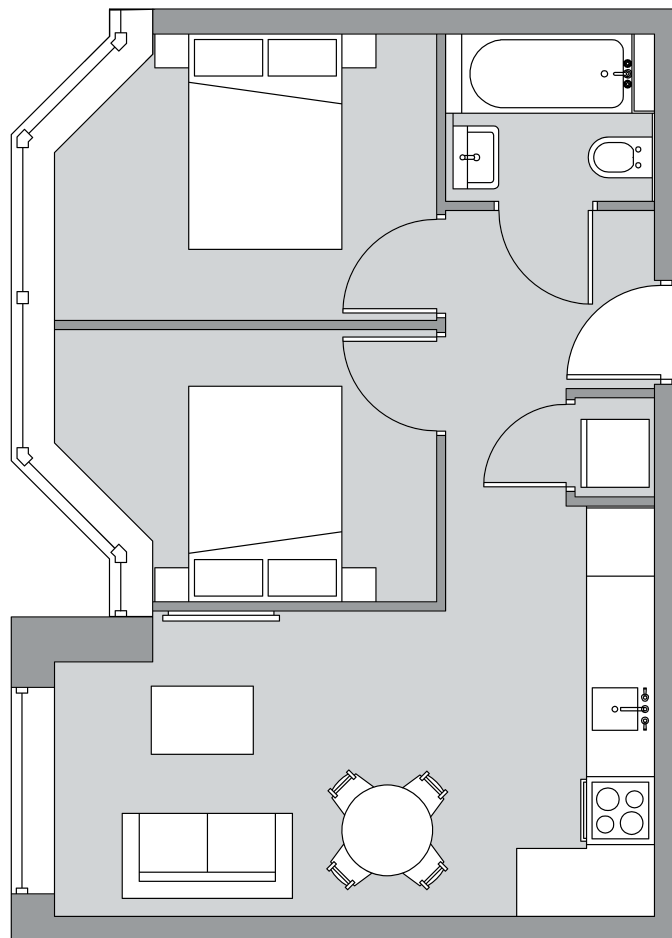
Second Floor



2 bedroom apartment

Apartment number: 02-14

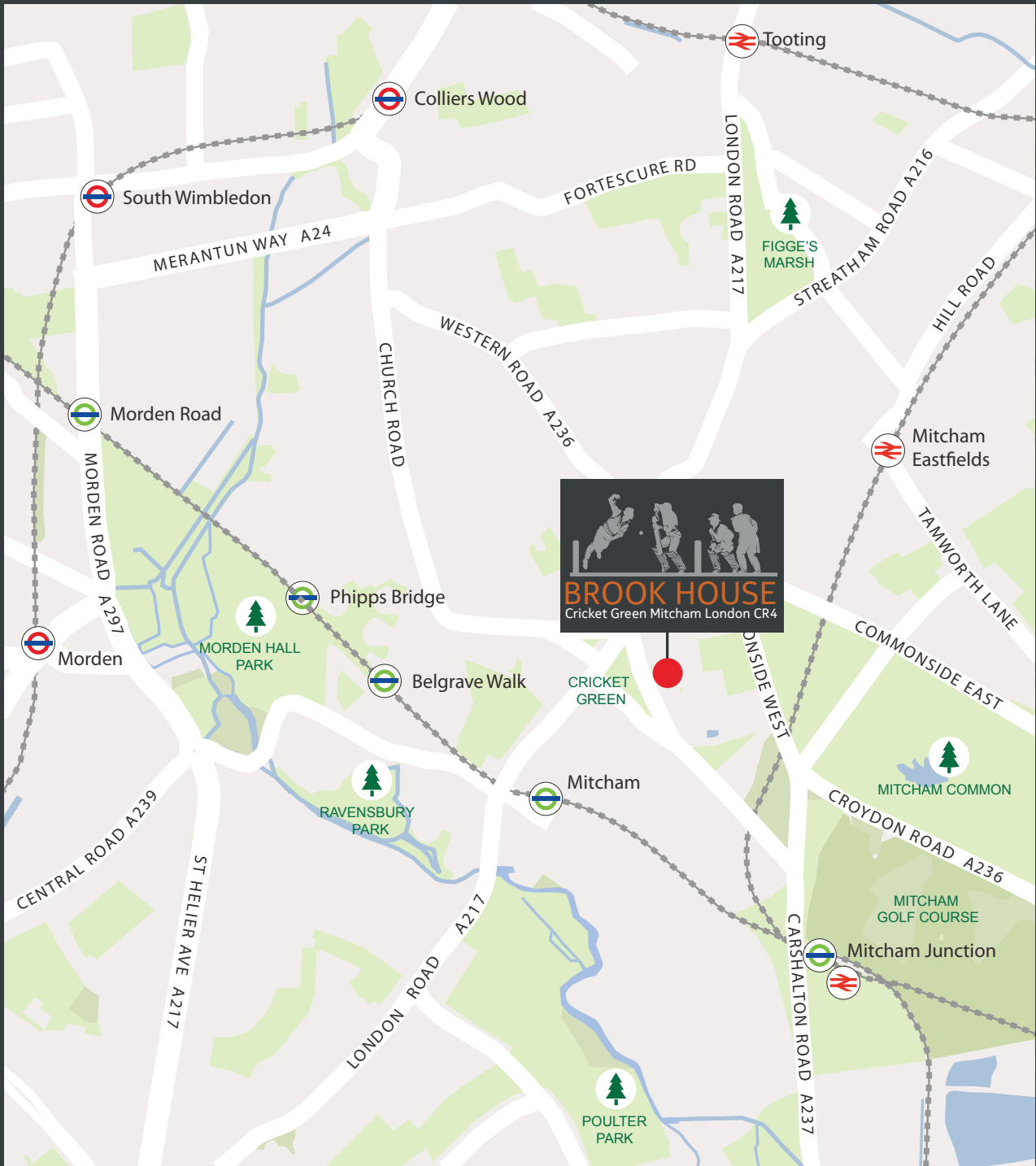
Total Area 40 sq m 431 sq ft



BROOK HOUSE

London CR4





DISCLAIMER

MONEY LAUNDERING REGULATIONS: Intending purchasers will be asked to produce identification documentation and we would ask for your co-operation in order that there will be no delay in agreeing the sale.

General: While we endeavour to make our sales particulars fair, accurate and reliable, they are only a general guide to the property and, accordingly, if there is any point which is of particular importance to you, please contact the office and we will be pleased to check the position for you, especially if you are contemplating travelling some distance to view the property.

Measurements: These approximate room sizes are only intended as general guidance. You must verify the dimensions carefully before ordering carpets or any built-in furniture. All measurements may vary within a tolerance of 5%. Kitchen layouts are indicative only and may vary.
Services: Please note we have not tested the services or any of the equipment or appliances in this property, accordingly we strongly advise prospective buyers to commission their own survey or service reports before finalising their offer to purchase.

THESE PARTICULARS ARE ISSUED IN GOOD FAITH BUT DO NOT CONSTITUTE REPRESENTATIONS OF FACT OR FORM PART OF ANY OFFER OR CONTRACT. THE MATTERS REFERRED TO IN THESE PARTICULARS SHOULD BE INDEPENDENTLY VERIFIED BY PROSPECTIVE BUYERS OR TENANTS. NEITHER GROSVENOR INTERNATIONAL NOR ANY OF ITS EMPLOYEES OR AGENTS HAS ANY AUTHORITY TO MAKE OR GIVE ANY REPRESENTATION OR WARRANTY WHATEVER IN RELATION TO THIS PROPERTY.



2001- 2003 Centre Point
 181-185 Gloucester Road
 Wan Chai
 Hong Kong
 t: +852 2573 6112
 e: investment@grosvenorhk.com

www.GIHLondon.com