





TOWER
BRIDGE

CITY
HALL

MORE
LONDON

LONDON
BRIDGE

REGENT'S
CANAL

SPITALFIELDS
MARKET

LIVERPOOL
STREET ➡

UAL COLLEGE
OF FASHION

ST. PAUL'S
CATHEDRA

THE HOUSES OF
PARLIAMENT

THE
WEST END

COVENT
GARDEN

LONDON
FIELDS

LONDON FIELDS
STATION ➡

THE CITY

WHITECHAPEL

SHOREDITCH

HOXTON

DALSTON

9 minutes
direct from
Liverpool Street

The place

HACKNEY CENTRAL

17 1 Bedroom penthouse apartment			
LIVING/DINING INC KITCHEN	4.4 x 6.3M	14'4" x 20'7"	
BEDROOM	3.1 x 3.8M	10'1" x 12'5"	
TOTAL AREA	50 sq.m.	538 sq.ft.	

12 1 Bedroom apartment			
LIVING/DINING INC KITCHEN	8.4 x 3.5M	27'5" x 11'5"	
BEDROOM	5.0 x 2.7M	16'4" x 8'10"	
TOTAL AREA	52 sq.m.	560 sq.ft.	



15 1 Bedroom penthouse apartment			
LIVING/DINING INC KITCHEN	5.1 x 5.3M	16'7" x 17'3"	
BEDROOM	3.0 x 3.5M	9'9" x 11'5"	
TOTAL AREA	50 sq.m.	538 sq.ft.	

16 1 Bedroom penthouse apartment			
LIVING/DINING INC KITCHEN	3.4 x 7.1M	11'1" x 23'3"	
BEDROOM	3.1 x 3.8M	10'1" x 12'5"	
TOTAL AREA	50 sq.m.	538 sq.ft.	



1 Bedroom Apartments

Floor finishes and furniture shown on apartment plans are for illustrative purposes only. Floor plan layouts are deemed to be correct but may vary during architectural finalisation of the building. All room dimensions are approximate, total areas are accurate to within 5%.

4 8 2 Bedroom apartment

LIVING/DINING INC KITCHEN	8.1 x 3.7M	26'5" x 12'1"
MASTER BEDROOM	4.5 x 2.7M	14'8" x 8'10"
BEDROOM 2	3.4 x 2.6M	11'1" x 8'6"
TOTAL AREA	61 SQ.M.	657 SQ.FT.

2 6 10 2 Bedroom apartment

LIVING/DINING INC KITCHEN	5.2 x 5.6M	17'0" x 18'4"
MASTER BEDROOM	3.8 x 3.3M	12'5" x 10'9"
BEDROOM 2	2.3 x 4.3M	7'6" x 14'0"
TOTAL AREA	65 SQ.M.	700 SQ.FT.



1 2 Bedroom apartment

LIVING/DINING INC KITCHEN	6.6 x 5.8M	21'6" x 19'0"
MASTER BEDROOM	3.1 x 4.8M	10'1" x 15'9"
BEDROOM 2	2.7 x 4.8M	8'10" x 15'9"
TOTAL AREA	76 SQ.M.	818 SQ.FT.

2 Bedroom Apartments

Floor finishes and furniture shown on apartment plans are for illustrative purposes only. Floor plan layouts are deemed to be correct but may vary during architectural finalisation of the building. All room dimensions are approximate, total areas are accurate to within 5%.

14 2 Bedroom penthouse apartment

LIVING/DINING INC KITCHEN	5.1 x 5.3M	16'7" x 17'3"
MASTER BEDROOM	3.3 x 4.1M	10'9" x 13'5"
BEDROOM 2	2.4 x 4.1M	7'10" x 13'5"
TOTAL AREA	61 sq.m.	657 sq.ft.



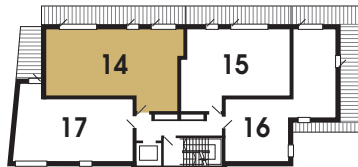
5 9 13 2 Bedroom apartment

LIVING/DINING INC KITCHEN	6.6 x 5.5M	21'6" x 18'0"
MASTER BEDROOM	3.1 x 4.8M	10'1" x 15'9"
BEDROOM 2	2.7 x 4.8M	8'10" x 15'9"
TOTAL AREA	71 sq.m.	764 sq.ft.

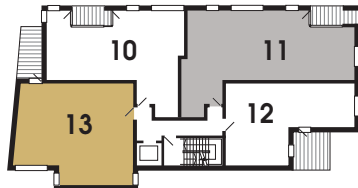


3 7 11 3 Bedroom apartment

LIVING/DINING INC KITCHEN	5.6 x 5.6M	18'4" x 18'4"
MASTER BEDROOM	2.8 x 4.3M	9'2" x 14'0"
BEDROOM 2	2.5 x 4.3M	8'2" x 14'0"
BEDROOM 3	2.1 x 4.3M	6'10" x 14'0"
TOTAL AREA	79 sq.m.	850 sq.ft.



4TH



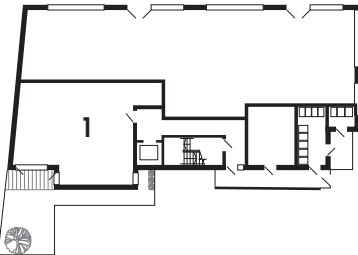
3RD



2ND



1ST



GND



2 & 3 Bedroom Apartments

Floor finishes and furniture shown on apartment plans are for illustrative purposes only. Floor plan layouts are deemed to be correct but may vary during architectural finalisation of the building. All room dimensions are approximate, total areas are accurate to within 5%.