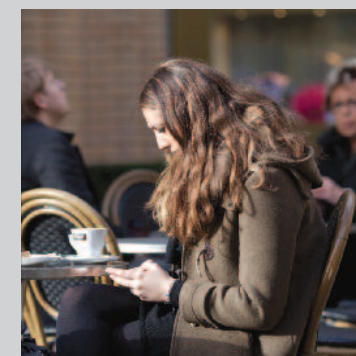




Stylish living in fashionable Chelsea



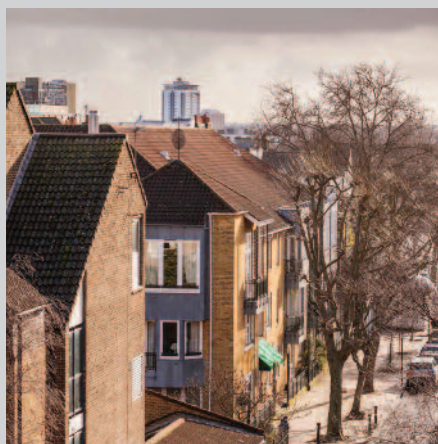
QUINTESSENTIAL LONDON LIVING.

Situated just off vibrant Kings Road, Chelsea and close to the River Thames, Westwood House promises its residents a lifestyle as lively or relaxed as they choose to make it. This fashionable part of London is renowned for its eclectic blend of stylish stores, restaurants, bars and entertainment, creating a dynamic social hub for those who want to get the best out of life.

THE BEST OF CONTEMPORARY STYLE.



Photographs depict some of the views from
Westwood House apartments



Westwood House comprises ten studios and one bedroom apartments, each designed to embrace effortless London living. Kitchens are equipped with quality units with stone worktops and a comprehensive range of appliances. Bathrooms are luxuriously appointed and flooring throughout is a combination of engineered oak, carpet and stone. It all adds up to apartments that meet the demands of contemporary living in the best of contemporary style.



Computer enhanced image of Westwood House



Eclectic. Cosmopolitan. Cultured.

THE DIVERSE ATTRACTIONS OF THE WORLD'S MOST EXCITING CITY ON YOUR DOORSTEP.

Restaurants

You're spoilt for choice in the Chelsea area with a select range of restaurants to suit all palates.

Dinner by Heston Blumenthal
Cheyne Walk Brasserie
Bibendum
Chutney Mary
La Famiglia
Bluebird
La Poissonerie



Shopping

From chic independents to major retailers, Chelsea and West London can't be beaten.

Peter Jones
Harvey Nicholls
Harrods
Gucci
Louis Vuitton
Jimmy Choo
Heals



Health and fitness

As well as open spaces to get your exercise there's a host of health clubs in the Chelsea area.

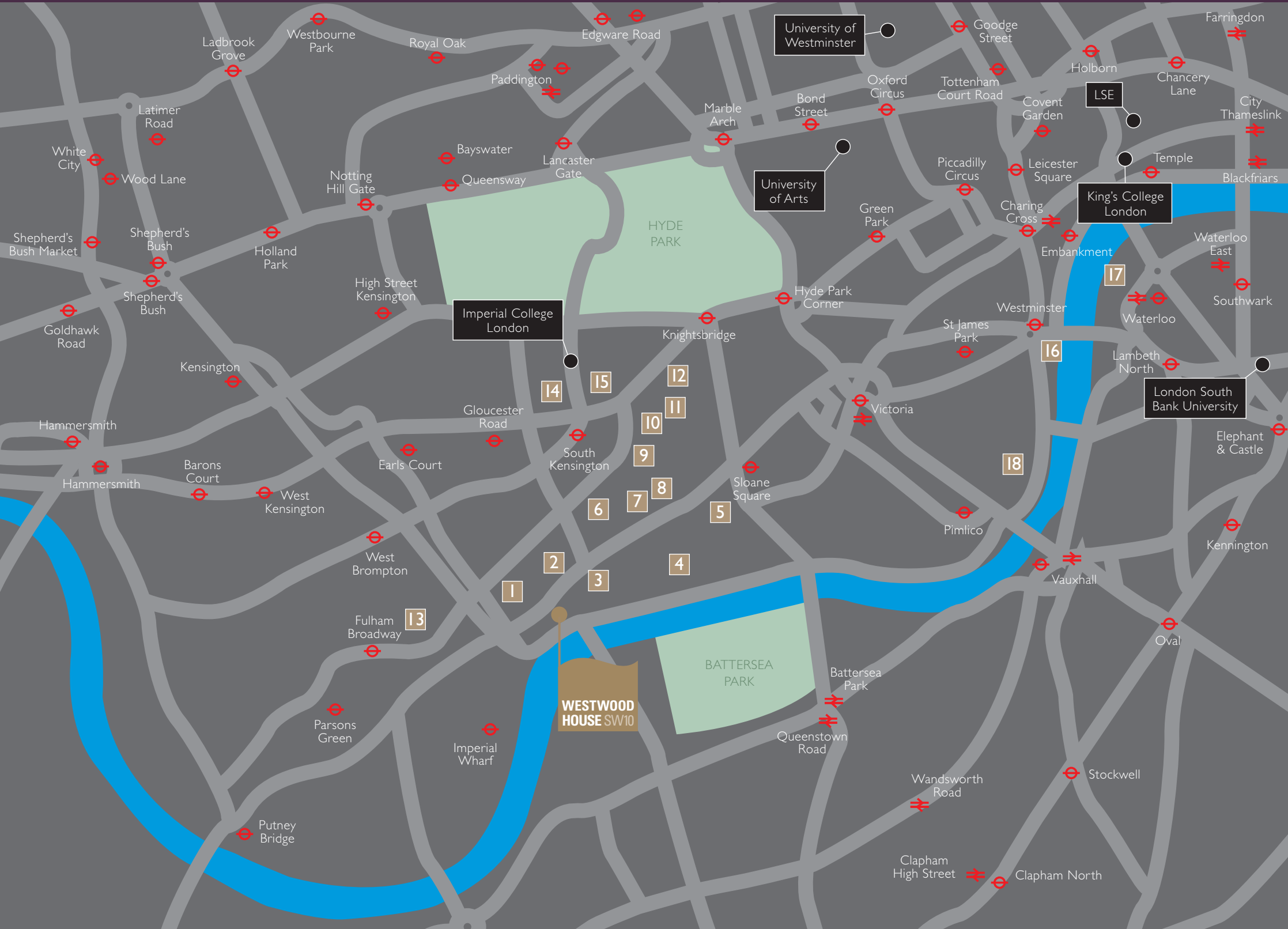
David Lloyd
LA Fitness
Virgin Active
The Chelsea Club
Battersea Park
Thames Riverside
Physic Garden



The world is your oyster. From Westwood House you have access not just to the dynamic Chelsea lifestyle, but to the rest of what is, arguably, the world's most exciting and diverse capital city. Take the tube from South Kensington and travel east to Sloane Square and The City. Continue on via the DLR to Canary Wharf and London City Airport. Or change at Victoria for rail services to London Gatwick or head north to the West End to take in the cultural and the cosmopolitan.



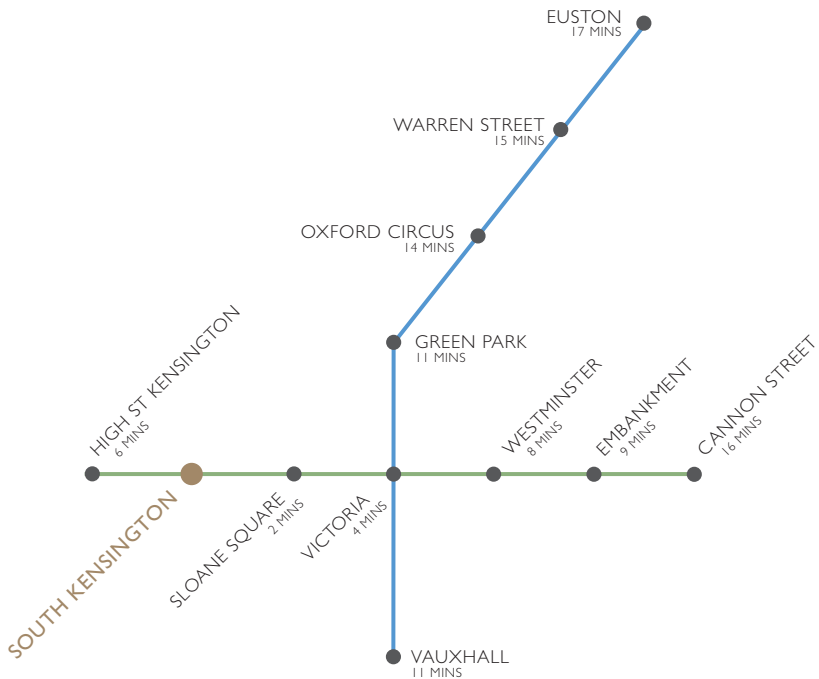
IN TOUCH WITH THE HEART OF THE CAPITAL.



- | | |
|----------------------------------|------------------------------|
| 1 Chelsea & Westminster Hospital | 10 Eclipse Bar |
| 2 Bluebird Cafe | 11 Jaks Restaurant |
| 3 Cineworld | 12 Harrods |
| 4 Restaurant Gordon Ramsay | 13 Chelsea Football Club |
| 5 Saatchi Gallery | 14 British Museum |
| 6 Royal Marsden Hospital | 15 Victoria & Albert Museum |
| 7 Heals | 16 Houses of Parliament |
| 8 Chelsea Farmers Market | 17 London Eye and South Bank |
| 9 Bibendum | 18 Tate Britain |



With a choice of Underground stations within close proximity to Westwood House, access to all areas of London is both straightforward and rapid. Additionally the Number 11 bus route provides a service connecting with Victoria, Westminster, Trafalgar Square, The City and Liverpool Street station.



Journey times from South Kensington sourced from tfl.gov.uk



UNCOMPROMISED DESIGN AND ATTENTION TO DETAIL.

The interiors of Westwood House have been impeccably designed to perfectly blend form and function with attention to detail throughout, culminating in stylish homes that are as pleasing to look at as they are to live in.



Interior photographs are indicative only

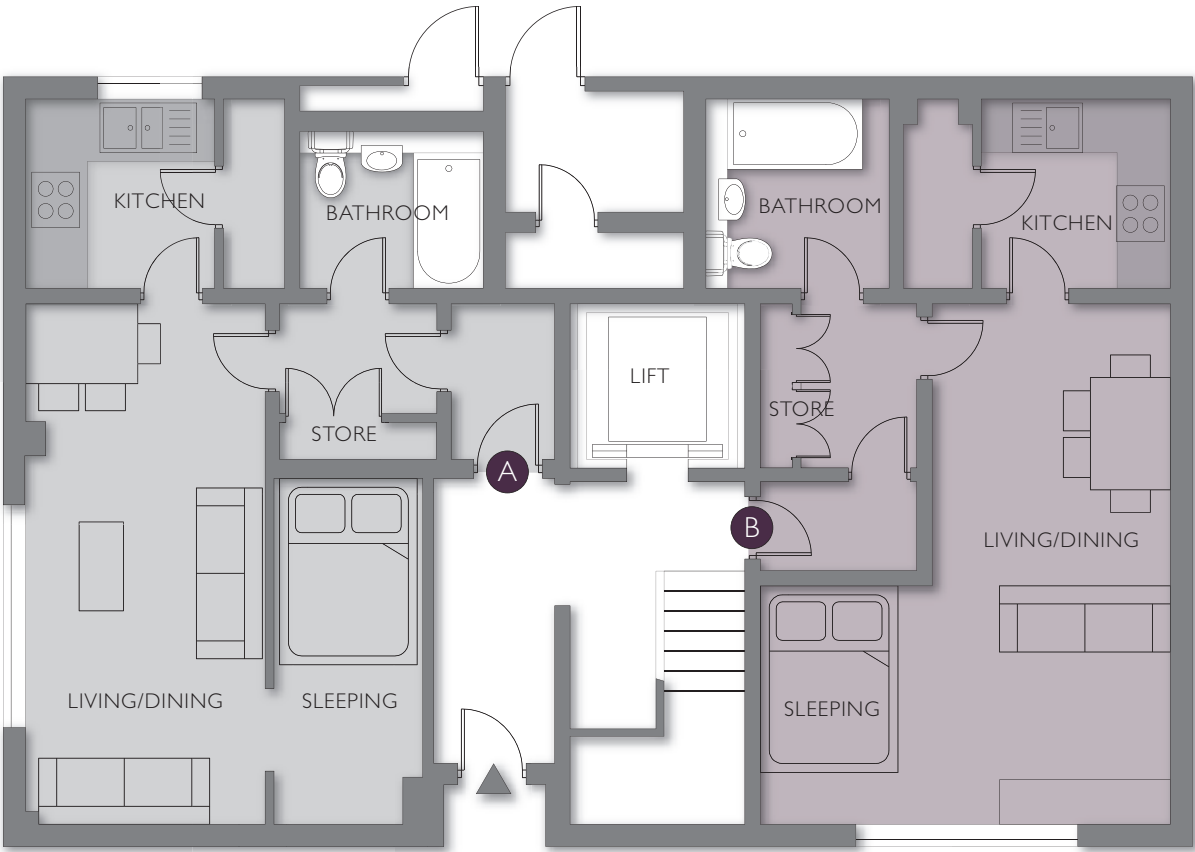


G

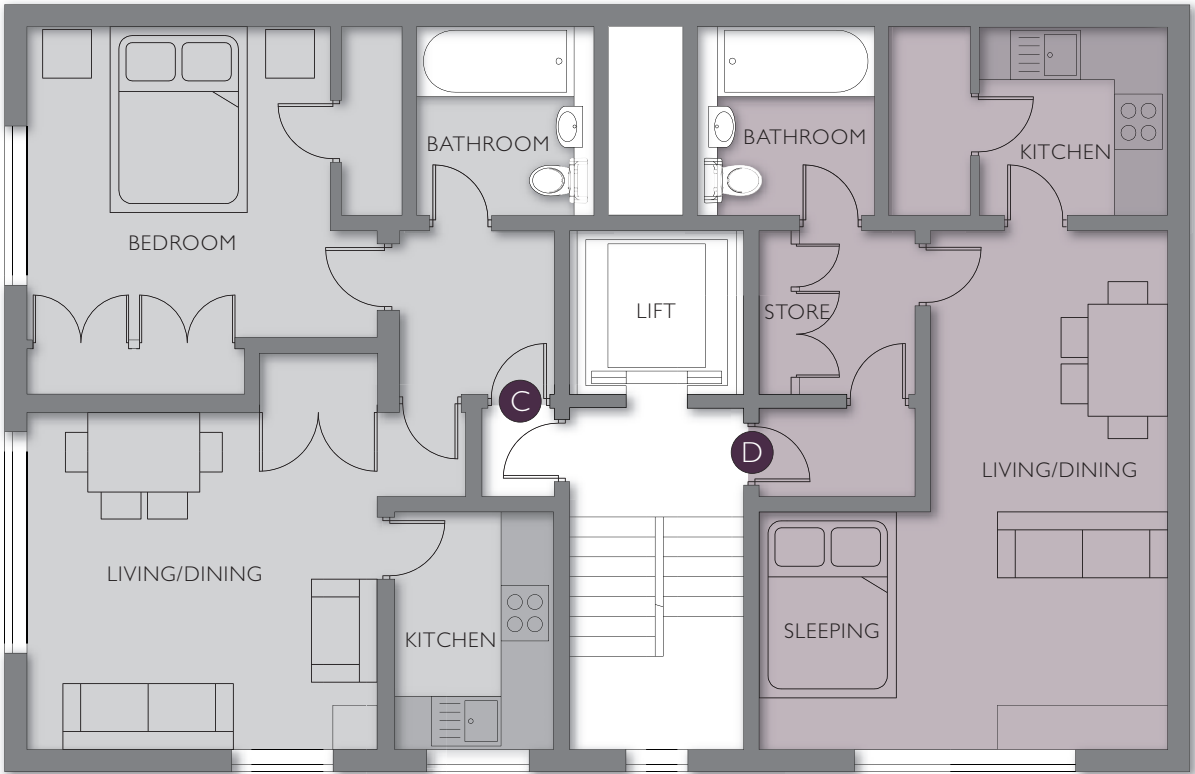
GROUND FLOOR APARTMENTS A & B

1

FIRST FLOOR APARTMENTS C & D



Milman's Street



Milman's Street

APARTMENT A

Living/Dining	19'2" x 8'10"	5.86m x 2.70m
Kitchen	9'7" x 6'11"	2.92m x 2.13m
Sleeping	12'9" x 5'5"	3.89m x 1.67m
Total Area	431 sq ft	40 sq m

APARTMENT B

Living/Sleeping	19'2" x 15'11"	5.86m x 4.62m
Kitchen	9'10" x 6'11"	3.01m x 2.13m
Total Area	409 sq ft	38 sq m

APARTMENT C

Living/Dining	12'11" x 12'6"	3.96m x 3.81m
Kitchen	8'9" x 5'10"	2.68m x 1.80m
Sleeping	13'10" x 13'7" (max)	4.24m x 4.16m (max)
Total Area	517 sq ft	48 sq m

APARTMENT D

Living/Sleeping	19'2" x 15'11"	5.86m x 4.62m
Kitchen	9'10" x 6'11" (max)	3.16m x 2.13m (max)
Total Area	409 sq ft	38 sq m

2

SECOND FLOOR APARTMENTS E & F



Milman's Street

APARTMENT E

Living/Dining	12'11" x 12'6"	3.96m x 3.81m
Kitchen	8'9" x 5'10"	2.68m x 1.80m
Sleeping	13'10" x 13'7" (max)	4.24m x 4.16m (max)
Total Area	517 sq ft	48 sq m

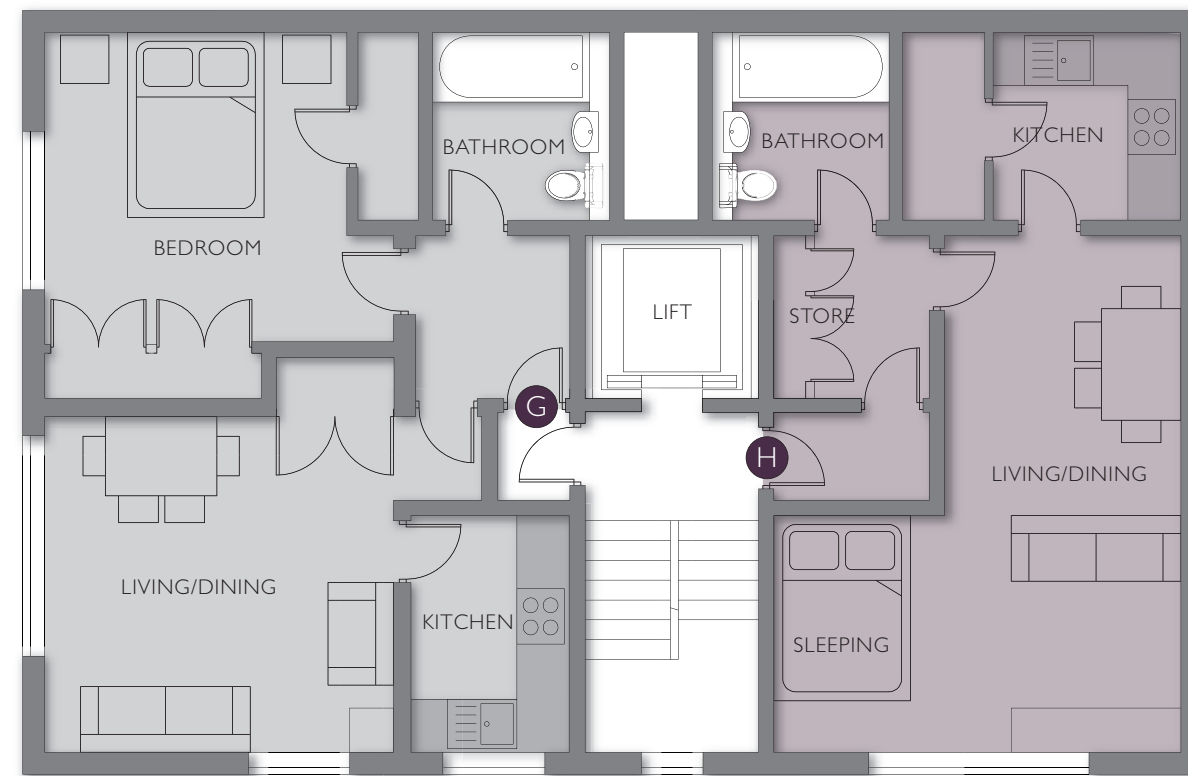
APARTMENT F

Living/Sleeping	19'2" x 15'1"	5.86m x 4.62m
Kitchen	9'10" x 6'11" (max)	3.16m x 2.13m (max)
Total Area	409 sq ft	38 sq m

WESTWOOD HOUSE CHELSEA

3

THIRD FLOOR APARTMENTS G & H



Milman's Street

APARTMENT G

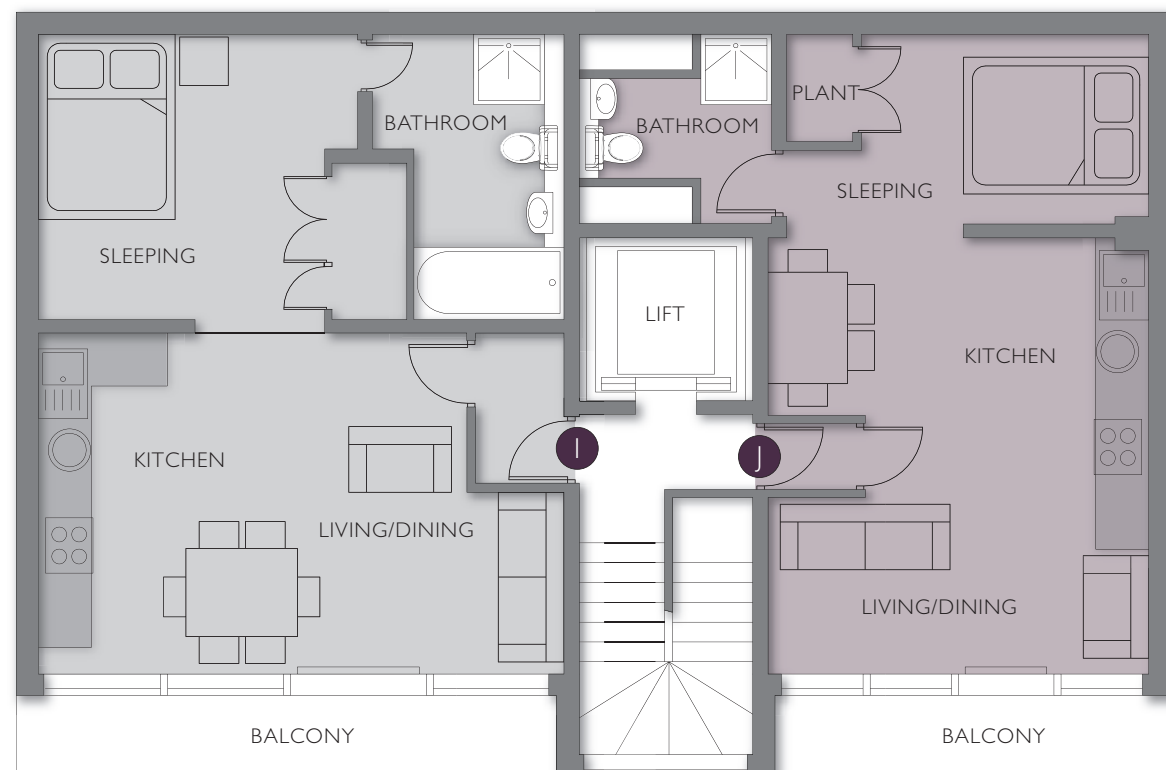
Living/Dining	12'11" x 12'6"	3.96m x 3.81m
Kitchen	8'9" x 5'10"	2.68m x 1.80m
Sleeping	13'10" x 13'7" (max)	4.24m x 4.16m (max)
Total Area	517 sq ft	48 sq m

APARTMENT H

Living/Sleeping	19'2" x 15'1"	5.86m x 4.62m
Kitchen	9'10" x 6'11" (max)	3.16m x 2.13m (max)
Total Area	409 sq ft	38 sq m

WESTWOOD HOUSE CHELSEA

FOURTH FLOOR APARTMENTS I & J



Milman Street's

APARTMENT I

Kitchen/Living	19'6" x 12'8"	5.96m x 3.87m
Sleeping	13'8" x 10'7" (max)	4.18m x 3.23m (max)
Total Area	463sq ft	43 sq m

APARTMENT J

Kitchen/Living	16'2" x 14'2"	4.94m x 4.32m
Sleeping	14'7" x 7'0"	4.46m x 2.14m
Total Area	388 sq ft	36 sq m





A SPECIFICATION IN TUNE WITH THE CHELSEA LIFESTYLE.

KITCHENS

- Individually designed layouts
- High gloss laquered finishes to cabinets with soft close drawers and doors
- Stone worktops
- Glass splash back between worktop and cabinets
- LED lights to wall units
- Under mounted sink
- Stainless steel mixer tap
- Under cabinet lighting
- Smeg, Miele or similar hob
- Smeg, Miele or similar integrated stainless steel multi function oven
- Smeg, Miele or similar built in fridge/freezer
- Smeg, Miele or similar built in washer/dryer
- Smeg, Miele or similar built in dishwasher

BATHROOMS

- Large walk in showers to Studios
- Frameless shower screen
- Square chrome mixer/ thermostatic control to shower
- Single ended baths to 1 bedroom apartments
- Square chrome mixer/thermostatic control to shower
- Combined bath filler /overflow
- Polished chrome heated towel rail
- Bespoke bathroom cabinet with mirrored soft close doors
- Stainless steel shaver socket in cabinet
- Fully tiled walls and floors in stone tiles in neutral colour

ATTENTION TO EVERY DETAIL.

INTERIOR FINISHES

- White painted walls and ceilings
- Engineered oak floors to entrance hall living room and kitchens
- Contemporary square edge skirting and architrave in oak veneer
- Hardwood, carpet or stone floor finished to selected areas
- Bespoke fitted wardrobes to bedrooms &/or entrance halls
- Contemporary chrome internal door furniture

ENTRANCE LOBBY/LOBBIES/STAIRCASE

- Tiled entrance / Mirrored feature wall
- Carpeted stairs and front door lobbies
- Feature lighting
- Painted walls and ceilings

ELECTRICAL FITTINGS

- All sockets and light fittings in polished stainless steel
- Dimmer light controls where applicable
- Bespoke lighting to each apartment

HEATING

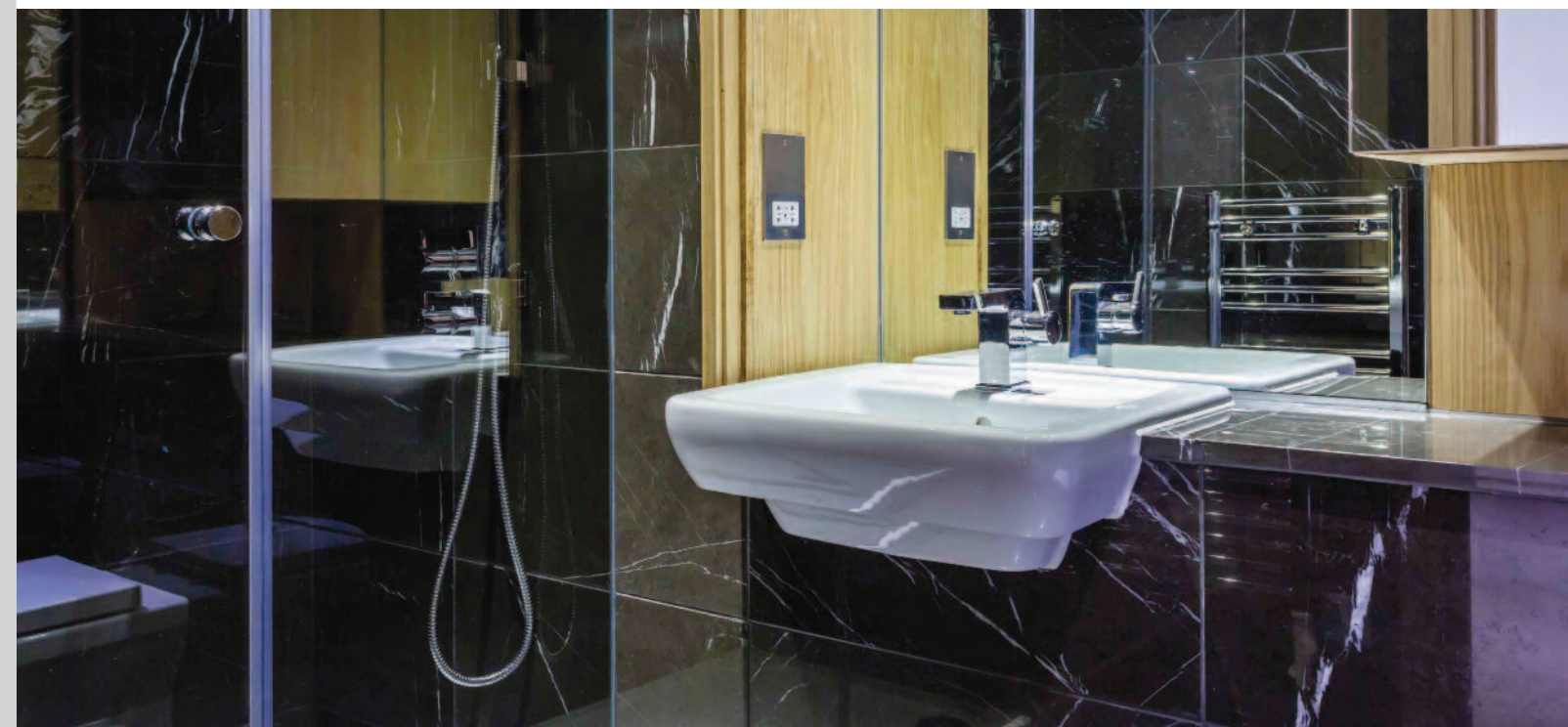
- Individual Boilers
- Contemporary flat panel radiators

SECURITY

- Video entry system viewing by individual apartment handset/screens
- Spy hole to apartment entrance doors
- Mains powered smoke detectors to hallways and heat detectors to kitchens

LIFT

- Passenger lift





Westwood House
Milman's Street SW10

HURLINGTON
PROPERTY

www.hurlington.com

in association with



www.galliardhomes.com

THE
PLATINUM
Collection

The information contained in these sales particulars should not be relied upon as statements or a representation of fact. Prospective purchasers should note that any elevations, room sizes/layouts have been taken from plan and may vary as construction takes effect. Any plans shown are for guidance purposes only. Any specification shown is correct at the time of printing. Prospective purchasers are advised to confirm such details before entering into a binding contract and are also advised to check current availability with the local office prior to making a journey.

HRL27340/6/13. Designed and produced by www.kbamarketing.co.uk